

**Versatility Defined –
The Hearing Solution To Meet
Your Client’s Unique Needs**

smile^{plus}

Life Is Better With A Smile



bernafon[®]
Innovative Hearing Solutions

Smile Plus – Versatile Solutions For A Diverse World

To enhance your client's quality of life a hearing instrument is needed that can be fit easily and accurately to virtually any hearing loss and lifestyle.

Smile Plus is an extremely versatile hearing system consisting of many elements that work together seamlessly to provide an optimal solution for your client's unique needs. Smile Plus is based on a proven digital technology platform developed by Bernafon's engineers in Switzerland. A complete multi-channel instrument family from CIC to Super Power BTE, Smile Plus is Bernafon's mid-range hearing solution that combines digital sound quality with exceptional versatility.



Smile Plus – Versatile product range

From the cosmetically appealing CIC to the Super Power BTE, Smile Plus can successfully amplify virtually any hearing loss from mild to profound:

- BTE Range: wide range to cover almost any need (including Dual Microphone solutions)
- New from Bernafon: A very powerful digital Super Power BTE
- ITE Range: from CIC to Concha ITE instruments with many user control options (including Dual Microphone solutions).

All Smile Plus benefits are available for mild to profound hearing losses.

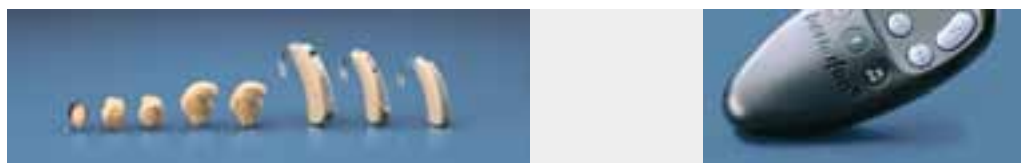
Smile Plus – Versatile options for user control

Smile Plus offers a variety of configurations for user control. Choose from:

- Fully automatic operation
- Remote Control
- Controls on the instrument

All Smile Plus hearing systems from the Super Power BTE to the tiny CIC can be controlled via the optional remote control!

A Digital Loudness Control (DLC) and other local controls are available on the instrument based on your client's preferences.





Smile Plus – Versatile digital hearing instruments to accommodate the unique needs of your clients.

Smile Plus – Versatile solutions for understanding speech in challenging environments

Smile Plus provides three options for enhancing speech in background noise and challenging acoustic environments:

- Dual Microphone Technology for a better signal to noise ratio
- Multiple listening programs to accommodate different environments
- Compatibility with ear level FM receivers.

Smile Plus – Versatile fitting with OASIS plus

The versatile Smile Plus signal processing requires a versatile and intuitive fitting platform. OASIS plus, the new standard in hearing instrument fitting software, offers unique fitting tools that have been specially developed for Smile Plus. Sophisticated, but easy-to-use tools are at your disposal:

- Easy and fast fitting in three simple steps
- Powerful fitting optimization with in-situ audiometry, automatic feedback management and a fitting assistant
- Fine tuning, including the advanced 3D display and other fine tuning tools.



Smile Plus – Versatile Product Range

Often, different hearing instrument families are needed to suite diverse audiogram configurations, hearing losses and client requirements.

A Smile Plus hearing system is the solution for virtually any hearing loss. From the Super Power Smile Plus 120 BTE to the discrete Smile Plus 400 CIC, the needs for power, cosmetic requirements, or ease of use can be easily accommodated.



Smile Plus BTE instruments

A full range of BTE digital hearing instruments is in the Smile Plus family. From the cosmetically appealing 100 Mini BTE to the 120 Super Power BTE, Smile Plus can accommodate your client's needs.

Smile Plus 120 BTE – the Super Power digital solution

Super Power BTE with a size 675 battery for moderate to profound hearing losses.

140 dB MPO and 83 dB Gain!

FM compatibility.

Smile Plus 100 BTE

A slim, Mini BTE for mild to moderate hearing losses. Without local controls. ON/OFF on battery compartment.

Smile Plus 110 BTE

A Compact Power BTE for moderate to severe hearing losses. With local DLC and M/T/O switch. FM compatibility.

Smile Plus 115 BTE DM

A Compact Power BTE for moderate to severe hearing losses. With Dual-Microphone Technology, local DLC and P1/T/P2 switch. ON/OFF on battery compartment. FM compatibility.



Smile Plus 120 Super Power BTE



Smile Plus 100 Mini BTE



Smile Plus – A full range with a variety of user control options, directional microphones and Super Power capabilities.

Smile Plus ITE instruments

Various control options (DLC, M/T, P1/P2 switches) or models give you the freedom to configure the instruments to best meet your clients needs.

Smile Plus 400 CIC

A completely-in-the-canal instrument with a size 10 battery for mild to moderate hearing losses, when cosmetics are of paramount importance.

Smile Plus 320 ITC, 310 ITC

Smaller, more cosmetic canal instruments with a size 312 battery for mild to moderate hearing losses.

Smile Plus 321 ITC, 325 ITE DM

Canal instruments with a size 312 battery for mild to moderately-severe hearing losses.

With local DLC and optional T-coil. Can be fitted with local control options.

Dual Microphone technology on 325 ITE DM.

Smile Plus 200 ITE, 205 ITE DM

Concha instruments with a size 13 battery for moderate to severe hearing losses.

With local DLC and optional T-coil.

Can be fitted with local control options.

Dual Microphone technology on 205 ITE DM.



Smile Plus 321 ITC



Remote control RC S with Smile Plus 400 CIC

Smile Plus – Versatile Options For User Control

Each client has different needs to control their hearing instrument. Some clients would like an automatic solution while others want control.

Smile Plus can accommodate any client preference with a remote control, local controls or fully automatic operation.



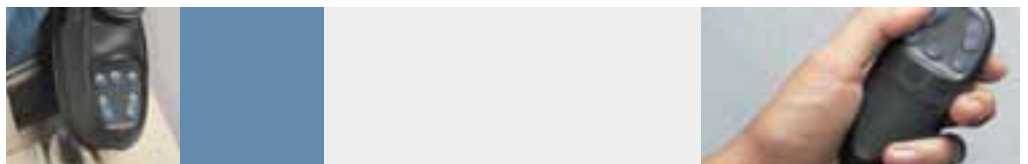
Control options are available to suit any client's requirements

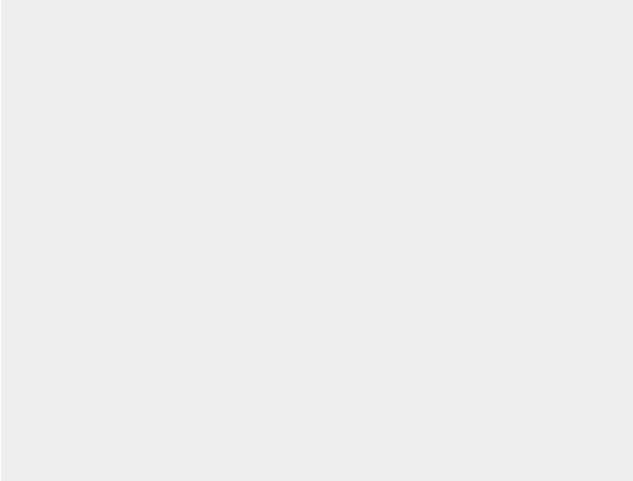
Smile Plus offers a variety of user control options. A Digital Loudness Control (DLC) and other local controls on the instrument are available. It is also possible to use an optional remote control with any Smile Plus instrument. These fitting alternatives allow the Hearing Care Professional to offer clients personalized user control over their hearing instruments.

Remote control

An optional remote control is available for clients that request discrete operation or have difficulties manipulating controls on the instrument. This remote control can be used in addition to the local controls installed on the hearing instrument.

The Smile Plus remote control has an ergonomic design suitable for both left and right-handed users. Its teardrop form ensures that the remote lies in the hand comfortably and that the 5 function keys are easy to feel and to activate.





Smile Plus – Client preferences for control are easily accommodated.

Local controls

Local controls can be configured to meet the requirements of any client.

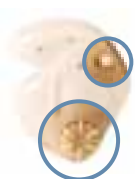
The functions of the local adjustment switches are to select programs and change between microphone and telecoil inputs.

The local DLC (Digital Loudness Control) can be easily used to adjust the volume of the Smile Plus hearing instrument for different environments.

Automatic functions

Smile Plus can be programmed as an automatic device – no user adjustments are needed!

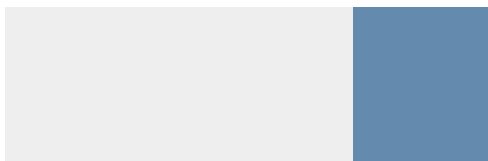
The Digital Loudness Control can be deactivated or a Smile Plus model without a DLC can be chosen.



Local control ITE



Local control BTE



Smile Plus – Versatile Solutions For Understanding Speech In Challenging Environments

A common complaint from many clients is that they have a lot of difficulty hearing in different environments.

Smile Plus offers versatile solutions for hearing in background noise, without degrading or distorting speech. Smile Plus accomplishes this with three innovative uses of technology.



Dual Microphone solutions for enhanced speech intelligibility in noise

The most effective way to increase speech intelligibility in noise is to enhance the signal to noise ratio by separating noise from speech prior to signal processing. A directional microphone can accomplish this in both ITE and BTE instruments.

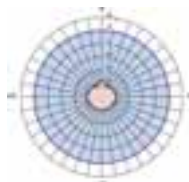
With an AI-DI* of 5.3 dB (ITE) and 3.9 dB (BTE) in a diffuse field, the Smile Plus Dual Microphone (DM) hearing instruments are among the highest performing directional hearing instruments on the market today.

Many manufacturers adjust the low-frequency response to compensate for the directional microphone's lower gain. Bernafon goes a step further and adjusts the response based on the hearing loss and input level. This allows for a better compromise between audibility and noise annoyance

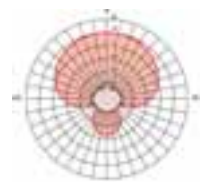
*The AI-DI (Articulation weighted directionality index) is the best-known overall indicator of the hearing instrument's ability to enhance speech intelligibility in noise. 1 dB of improvement in AI-DI can mean a 10% increase in intelligibility.



Omni directional microphone



Directional microphone





Smile Plus – Increase client acceptance in many different listening environments.

Multiple Listening Programs – Two alternative frequency responses and compression characteristics for diverse environments

All Smile Plus hearing instruments have a second listening program which can be configured to meet the unique needs of your client. The second program can be easily preset for noisy situations. A Music preset is available and additional presets can also be selected. Each program can be independently adjusted for personal tailoring.

FM Communication Capability – Smile Plus 120, 115, and 110 BTE hearing instruments interface with ear level FM receivers

FM systems increase the signal-to-noise ratio by bringing the microphone closer to the signal source. This has been proven to improve intelligibility in challenging situations, such as:

- Noisy areas such as restaurants, in cars or trains
- Distances such as lecture halls, cinemas, theaters etc
- Rooms with high reverberation (reflective surfaces).



Smile Plus – Versatile Fitting With OASIS plus

Each manufacturer has a different fitting approach and their concepts may even differ for each instrument family. This can be time consuming for the Hearing Care Professional.

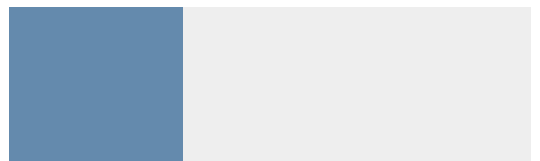
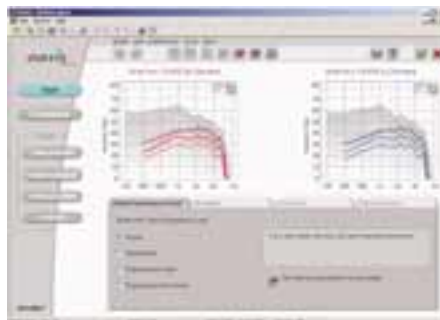
Bernafon has one software platform – OASIS plus with similar fitting methods, for all Bernafon digital hearing instruments which is intuitive to use and easy to understand. More time can be spent on the client rather than on learning new software concepts.

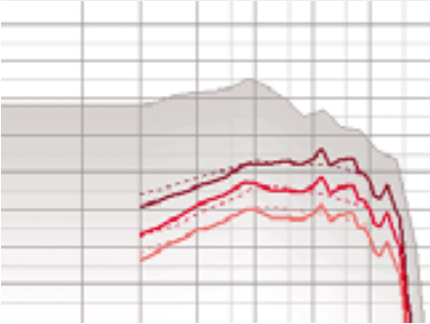


The versatile Smile Plus signal processing requires a versatile and intuitive fitting platform! OASIS plus, the new standard in hearing instrument fitting software, now has unique fitting tools that have been specially developed for Smile Plus.

Fitting Smile Plus with OASIS plus can be achieved with three simple steps:

1. Set the Client Experience Level
2. Ensure the Acoustics of the hearing instrument match the description in OASIS plus
3. Complete by saving the fitting if the client is satisfied.





OASIS plus – Easy, quick and accurate fitting.

OASIS plus gives you the tools to easily optimize the fitting according to your strategies and philosophies

Client experience level

Just as it takes some time to adjust to a new pair of shoes, it also takes some time to adjust to a new hearing instrument. The Client Experience Level allows for gradual introduction to amplification so that users can benefit from their Smile Plus hearing instruments starting at Day 1.

Feedback management

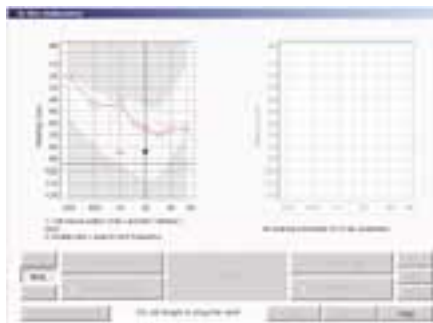
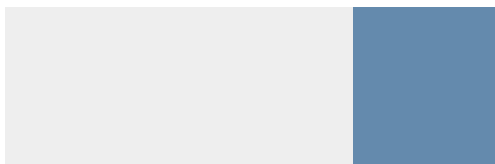
The new Automatic Feedback Manager can eliminate feedback easily and efficiently. Critical gain is automatically determined with the click of a button and feedback is swiftly removed.

Fitting assistant

The Fitting Assistant provides guided fine tuning support, involving the client in decision making throughout the fitting.

In situ audiometry

Smile Plus now offers the possibility to assess hearing loss with the hearing instrument. In situ audiometry accounts for the individual acoustics of each client's ears.



Smile Plus – Versatile Fitting With OASIS plus

There are instances when a client's concerns cannot be met with standard fine tuning tools.

OASIS plus provides advanced fitting tools to adjust Smile Plus to meet the requirements of any client.

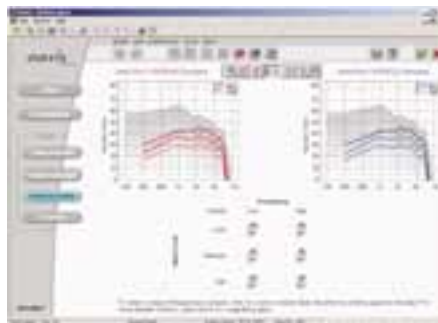


Technical toolbox

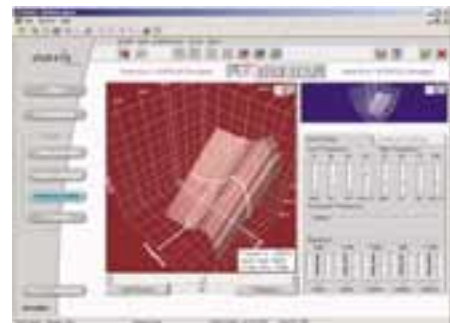
The Technical Toolbox provides two levels of adjustment possibility.

The first level allows for specific adjustments to the low or high frequencies at soft, medium or loud input levels.

The second level provides direct parameter access, including the highly flexible Equalizer, for greater adjustment specificity. In addition, the traditional input/output and frequency response graphs are combined for the first time to visualize the response in three dimensions (3D display).



Technical toolbox level 1



Technical toolbox level 2



OASIS plus – Powerful tools to optimize the fitting for each client.

Multi-program management

The performance can be easily tailored to match your client’s most important environments and lifestyle.

Sound Player with built-in sound level meter

The sound level meter and Real World Sounds in OASIS plus remove the guesswork from fine tuning.

Smile Plus – versatile enough to fit virtually any hearing loss

With controls such as these, you can tailor the response for virtually any hearing loss:

- 5-band Graphic Equalizer with adjustable center frequencies effectively gives the hearing care professional 15 possible areas to control the frequency response.
- Gain in the high and low frequency channels
- AGC-I TK (threshold kneepoint) and CR (compression ratio) in the high frequency and the low frequency channels
- AGC-O for the adjustment of the MPO in the high and low frequency channels
- Cross over frequency between channels



Accessories

Many clients have the need for added functionality that extends beyond the standard digital hearing instrument.

Smile Plus has many accessories that can be used with the entire hearing instrument range depending upon the client's hearing loss and lifestyle requirements.



Optional CROS/BiCROS adapter

Bernafon CROS / BiCROS adapter system can be used with the Smile Plus 110 BTE, 115 BTE DM and 120 BTE instruments.

Optional shoes for Direct Audio Input

Audio shoes provide connections to the DAI (Direct Audio Input) for the Smile Plus 110, 115, and 120 BTE hearing instruments. External devices such as microphones, FM systems etc. can be connected to the hearing instruments. Smile Plus is fully compatible with ear level FM receivers.

Smile Plus for children

Several options are available to optimize the use of Smile Plus for children:

- The battery door on the Smile Plus 110, 115, and 120 BTE's can be easily locked.
- Special child ear hooks are available for pediatric fittings of the Smile Plus BTE's.
- Fittings are automatically corrected for children within OASIS plus.
- Remote Control gives the care-giver control over the child's listening experience.
- A variety of BTE colors are available to suit child's taste.





Smile Plus – Accessories to further enhance the benefits of your client’s hearing instrument system.

Specifications	ITE instruments								BTE instruments			
Max Full-on gain Peak [dB] (Earsim.)	48	55	59	59	58	63	63	83	69	71	60	
Max Peak OSPL 90 [dB SPL] (Earsim.)	119	122	127	127	127	132	132	140	135	134	132	
Switches	-	-	opt M/T opt P1/P2	opt M/T opt P1/P2	opt M/T opt P1/P2	opt M/T opt P1/P2	opt M/T opt P1/P2	M/T	P1/T P2	M/T/0	-	
T-Coil	-	-	opt	opt	opt	opt	opt	yes	yes	yes	yes	
Remote control	yes	yes	yes	yes	yes	yes	yes	yes	yes	yes	yes	
Digital Loudness Control	-	-	-	rotary	rotary	rotary	rotary	toggle	rotary	rotary	-	
Battery type	10	312	312	312	312	13	13	675	13	13	13	
FM / DAI	-	-	-	-	-	-	-	yes	yes	yes	-	
Instruments	S+ 400 CIC	S+ 310 ITC	S+ 320 ITC	S+ 321 ITC	S+ 325 ITE DM	S+ 200 ITE	S+ 205 ITE DM	S+ 120 BTE	S+ 115 BTE DM	S+ 110 BTE	S+ 100 BTE	



Life Is Better With A Smile

Bernafon provides a wide range of digital hearing systems that cover all of your client's needs. All hearing instruments are fit with OASIS plus – the single, intelligent fitting software for all Bernafon instruments.

bernafon[®]
Innovative Hearing Solutions

World Headquarters
Switzerland: Bernafon AG
Morgenstrasse 131
3018 Bern
Phone +41 31 998 15 15
Fax +41 31 998 15 90
www.bernafon.com

USA: Bernafon Inc.
200 Cottontail Lane, Building B
Franklin Township
Somerset, NJ 08875-6724
Toll free 1 - 888-941-4203
www.bernafon-us.com
info@bernafon-us.com

Canada: Bernafon Canada Ltd.
500 Trillium Drive Unit 15
Kitchener, Ontario N2R 1A7
Phone +1 519 748 6669
Fax +1 519 748 9158
Toll free 1 800 265 8250
TDD +1 519 748 1054
www.bernafon.ca

Bern - Berlin - Brisbane - Copenhagen - Gdańsk - Glasgow - New Jersey - Paris - Rome - Stockholm - Tokyo - Toronto