

Oticon Medical has played a key role in revolutionizing the field of bone anchored hearing care. With user needs as our driving force, and the most sophisticated sound technology as our means, we aim to empower and bring freedom of choice to users of bone anchored hearing systems.

USA

Oticon Medical LLC
580 Howard Avenue
Somerset, NJ 08873
Phone: 1-888-277-8014
Fax: 1-732-868-6949
Email: info@oticonmedicalusa.com
www.oticonmedical.com/us



70074_19900-1200/02.16

Bone Anchored Hearing Systems for Conductive/ Mixed Hearing Loss



oticon
MEDICAL | Because
sound matters

What is conductive/mixed hearing loss?

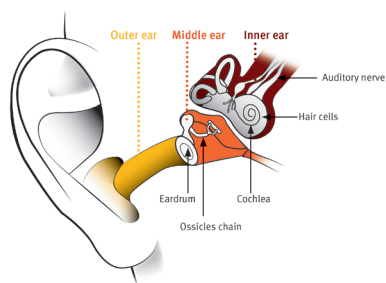
An obstacle somewhere in the outer and/or middle ear that stops airborne sound waves from reaching your inner ear.

What are some causes of conductive and mixed hearing loss?

- Atresia and/or Microtia
- Chronic ear infections
- External otitis
- Traumatic injury to middle ear structures
- Otosclerosis

How will a bone anchored hearing system help?

A bone anchored hearing system, like Ponto, is specifically designed to bypass any problems in the ear canal or middle ear, offering you clearer, more natural listening. The sound processor sends sound directly to the cochlea via bone conduction where the sound signal bypasses the conductive element of the hearing loss.



What are the benefits of a bone anchored hearing system?

The Ponto System is designed to address the everyday challenges you face with a loss of hearing – from understanding conversations in crowded situations to coping with outdoor wind noise:

Clear and natural sound

Transferring sounds to the inner ear completely bypasses problems in your ear canal or middle ear, yet not using as much amplification, so the sound quality feels more natural.

A comfortable solution

The ear canal is kept completely open, which may be more comfortable and less problematic if you suffer from ear infections and irritation.

A safe and simple procedure

The surgical procedure to have a bone anchored implant placed is safe and simple, doesn't take very long, and there is no risk of damage to your ear or your hearing. If you change your mind at any point, the procedure is reversible.

What are the advantages compared to conventional bone conductors?

Patient comfort is improved as there is no constant pressure against the skull and the implanted sound processor is more discreet. In addition, sound quality is better as there is no attenuation of the signal passing through the skin.



Responses from our patients who chose the Ponto System:

"Since Jack got his Ponto Plus sound processors, it is like he grew up in an instant."

"It's amazing. I no longer have to position myself at meetings."

"I no longer have to struggle to keep up."

"You get so much more out of it than you really expect."