

# One Smart Solution. The Power to Choose.



SMALL. SMART. POWERFUL.



Cochlear®

Hear now. And always



### **Award Winning Innovation**

We're not the only ones who think the Baha 5 Sound Processor is something special. Everyone else does too. In fact, it was awarded the world's most prestigious design award, the Red Dot Award: Product Design 2015, which is only given to outstandingly creative, innovative and high quality products.



**reddot award 2015**  
winner

For the first time, patients have access to smart and powerful technology across an entire bone conduction portfolio.

The world's  
**SMARTEST**  
power device

The world's  
**SMALLEST**  
sound processor

The world's most  
**POWERFUL**  
head-worn solution

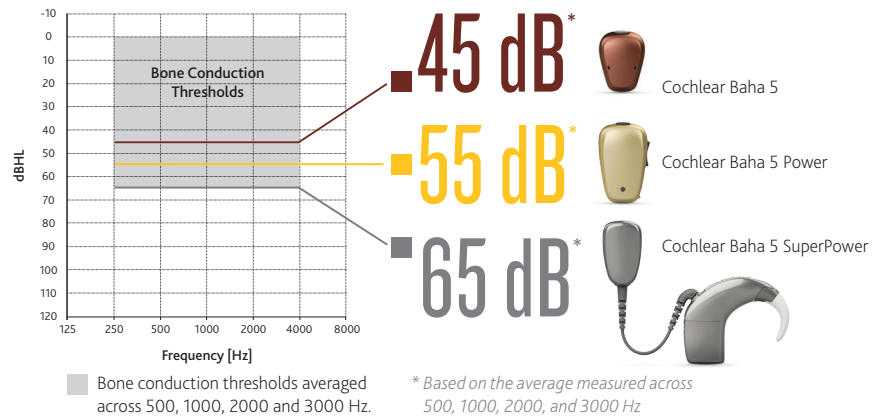


# Small. Smart. Powerful.

The Cochlear™ Baha® 5 Sound Processors offer your patients more possibilities for a lifetime of better hearing. With the widest and most powerful sound processor portfolio, you have the tools to deliver excellent hearing performance to more patients than ever before.

## Widest Fitting Range

The Cochlear Baha 5 System is the first bone conduction system with head-worn options up to 65 dB SNHL.



## Baha 5 Sound Processor

The award winning Cochlear Baha 5 Sound Processor is the industry's smallest sound processor, yet delivers the same power output as other devices with fitting ranges up to 45 dB SNHL<sup>1</sup>. The small size and improved hair-matching colors make it easier for patients who prioritize discretion to hide their sound processor. In user testing, 9 out of 10 patients preferred the size, design and discreetness when presented with the choice of other 45 dB SNHL sound processors.<sup>1</sup>

World's  
**SMALLEST**<sup>1</sup>





### Baha 5 Power Sound Processor

The all-new Cochlear Baha 5 Power Sound Processor is ideal for patients who love the features of the Baha 5 Sound Processor but require more power. It is a fully featured sound processor with a fitting range up to 55 dB SNHL. The Baha 5 Power is easy to handle, and with a LED visual indicator and integrated tamper-proof battery door it is an excellent choice for pediatrics.

World's  
**SMARTEST**  
Power



World's most  
**POWERFUL**

### Baha 5 SuperPower Sound Processor

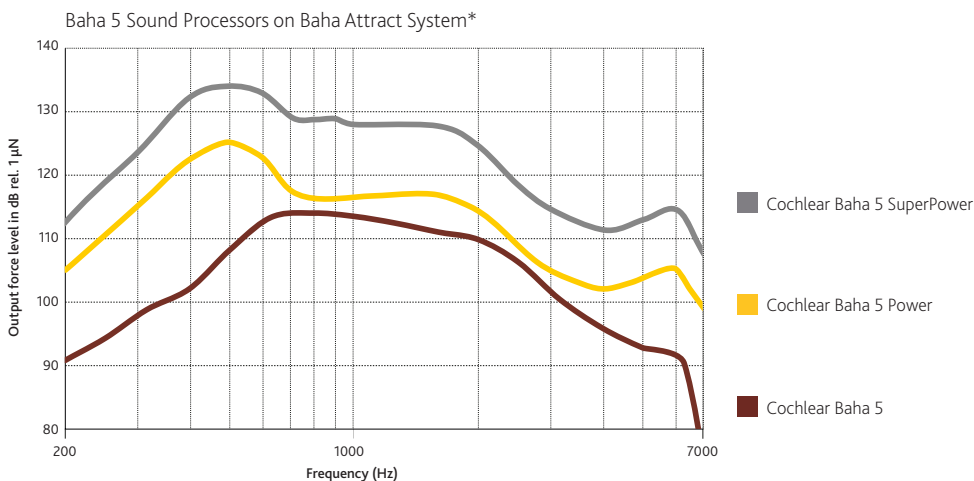
The revolutionary new Cochlear Baha 5 SuperPower Sound Processor merges Baha and Nucleus® technology to make it the first ear-level sound processor for bone conduction. With a decoupled transducer, it is the most powerful head-worn sound processor and has a fitting range up to 65 dB SNHL<sup>2</sup>. Designed specifically with mixed loss patients in mind, the Baha 5 SuperPower can help more patients who may be suffering from inadequate amplification.

# The most powerful magnetic system.

The Cochlear Baha Attract System just got a whole lot more powerful. With two new sound processors, the system delivers more power in the high frequency ranges, further improving speech understanding in both quiet and noisy environments compared with the previous generation.<sup>3</sup>

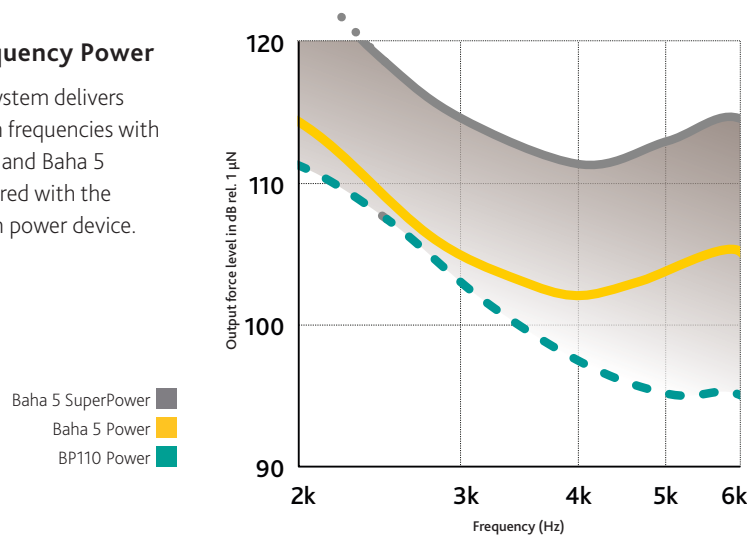
## The Widest Portfolio and Fitting Range

Unlike other under-the-skin bone conduction implant systems, the Baha Attract System can be fitted with a choice of three head-worn sound processors. The widest fitting range<sup>2</sup> of up to 65 dB SNHL ensures more patients than ever before can enjoy the benefits of a non-skin penetrating solution.



## More High Frequency Power

The Baha Attract System delivers more power at high frequencies with both Baha 5 Power and Baha 5 SuperPower compared with the previous generation power device.



Up to  
**20 dB\*\***  
more power at  
high frequencies\*

\*OFL90 Baha Attract System measured on Artificial Mastoid IEC 60318-6

\*\* Baha 5 SuperPower compared with BP110 Power at 6,000 Hz.



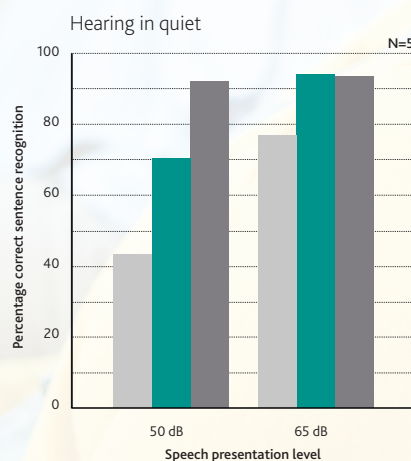
For patients with  
**MIXED LOSS  
AND SSD**

with higher levels of  
transcranial attenuation

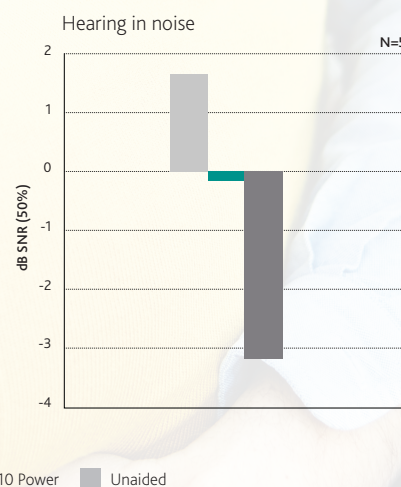
7

### Now With Even Better Hearing Performance

Initial results indicate improved hearing performance for Baha Attract patients upgrading from the previous generation power device to the Baha 5 SuperPower.<sup>3</sup>



Average  
**28%**  
improvement  
at 50 dB



Average  
**3 dB**  
improvement  
in noise

■ Baha 5 SuperPower ■ BP110 Power ■ Unaided

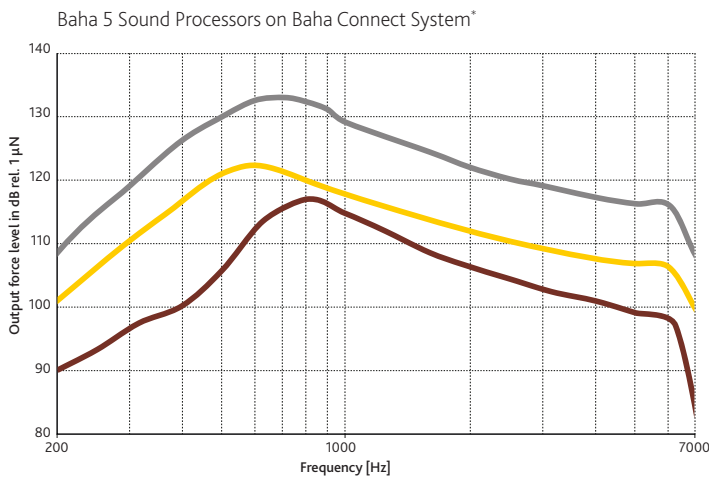
# The most powerful and proven direct system.

Featuring three smart head-worn sound processors, unique implant and abutment technology, the Cochlear Baha Connect System delivers excellent hearing performance<sup>4</sup> and patient outcomes.<sup>5,6</sup>

## The Most Complete Sound Processor Portfolio

The Baha Connect System's head-worn power options deliver access to more gain through higher power output than any other bone conduction implant system<sup>2</sup>.

For patients who need  
**MAXIMUM POWER**  
through direct bone conduction



■ Cochlear Baha 5 SuperPower

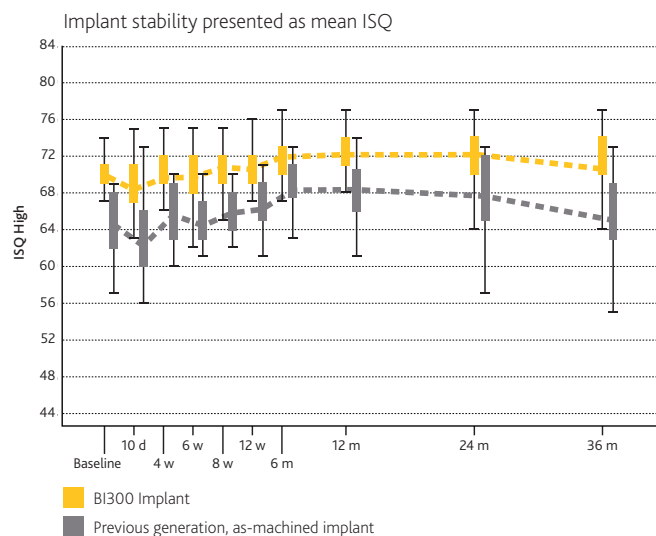
■ Cochlear Baha 5 Power

■ Cochlear Baha 5



## 3 Years of Proven Stability

The long-term clinical performance of the BI300 is proven through three years of continuous clinical study<sup>8</sup>. The wider 4.5 mm diameter and TiOblast™ surface enhance primary and long-term stability compared with the previous generation, as-machined implant.



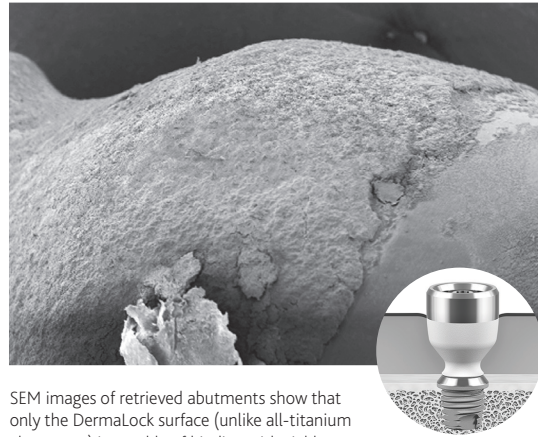
\*OFL90 Baha Connect System measured on skull simulator TU1000



---

### Soft Tissue Integration

Minimally invasive surgery with DermaLock™ technology promotes soft tissue integration and a long-term, healthy abutment site. In a clinical study, the DermaLock Abutment showed a statistically significant reduction in numbness, faster wound healing, less neuropathic pain, improved aesthetic outcomes and fewer abutment changes due to skin overgrowth.<sup>5,6</sup>



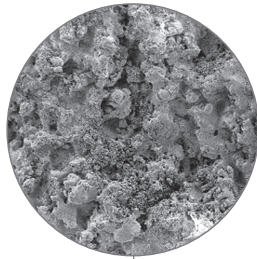
SEM images of retrieved abutments show that only the DermaLock surface (unlike all-titanium abutments) is capable of binding with viable soft tissue.<sup>7</sup>

The clinical performance of the Baha Connect System  
has been proven through both the  
**LONGEST<sup>8</sup>** and **LARGEST<sup>6</sup>**  
prospective clinical studies in bone conduction



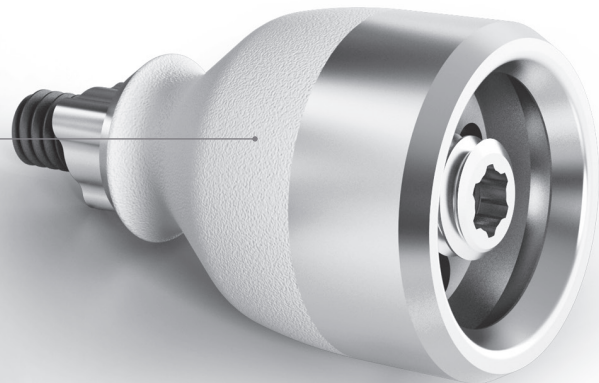
#### TiOblast Surface

Scanning electron micrographs of the TiOblast surface.



#### DermaLock Surface

Scanning electron micrographs of the DermaLock surface.



# Unbelievably smart.

All Baha 5 Sound Processors feature the same Ardium™ Smart platform. They are the first sound processors that can stream sound directly from iPhone®, iPad® or iPod® touch—without the need for a secondary device or bulky neck-worn hardware.

## The Direct-To-Device Difference

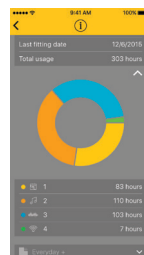
With new Bluetooth® technology designed by Apple, Baha 5 Sound Processors make it easy for your patients to connect with the people and devices they love. Unlike any other bone conduction system, Baha 5 Sound Processors are Made for iPhone Hearing Devices that stream sound directly from iPhone, iPad or iPod touch.

Made for iPhone Hearing Devices are designed to provide outstanding sound quality, so your patients can enjoy clearer phone conversations, watch movies, listen to music on the go or have a FaceTime call with family on the other side of the world. Speech and audio streams directly to the sound processors without any extra device getting in the way.

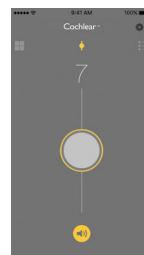


## Smart App For A Seamless Hearing Experience

The Baha 5 Smart App lets patients personalize their listening experience directly from their smart phone. They can save customized programs, adjust treble and bass settings and even track down a misplaced sound processor. Inbuilt data logging and a quick overview can give both you and caregivers added insight into how the sound processor is used. Patients who do not have a smart phone can also control the sound processor through a Cochlear Baha Remote Control or other wireless accessories.



Data Logging



Volume Control



Program Change and Customized Programs



Cochlear Baha 5 Sound Processors are compatible with iPhone 6s Plus, iPhone 6s, iPhone 6 Plus, iPhone 6, iPhone SE, iPhone 5s, iPhone 5c, iPhone 5, iPad Pro, iPad Air 2, iPad Air, iPad (4th generation), iPad mini 4, iPad mini 3, iPad mini 2, iPad mini with retina display, iPad mini and iPod touch (5th generation) running iOS 7.X or later. The Cochlear Baha 5 Smart App works together with all Cochlear Baha 5 Sound Processors. It is verified on iPhone, iPad and iPod touch running iOS 9.1 and Samsung Galaxy S6 and S7 running Android OS 5.0 Lollipop. For more detailed device compatibility see the Baha 5 Smart App description on App Store or Google Play.





# True Wireless™ freedom.

Cochlear True Wireless™ technology lets patients enjoy high-quality audio streamed through a secure 2.4 GHz connection. There is a range of easy-to-use accessories designed to improve hearing in noise and over distance.

---

## Cochlear Wireless Mini Microphones

The Mini Microphone 2 and 2+ are portable audio streamers that help bridge the gap between patient and speaker. They are cost-effective, easy-to-use devices that bring flexibility and freedom to difficult listening situations.



---

## Cochlear Wireless TV Streamer

The TV Streamer lets your patients enjoy stereo sound directly from the TV while still being able to take part in conversations.



---

## Cochlear Wireless Phone Clip

The Phone Clip gives patients a hands-free connection to their smartphone for more comfortable phone conversations, even in noisy environments.







# A first-class hearing experience.

Unique technologies inside the Baha 5 Sound Processors ensure patients can enjoy high-quality sound in all listening environments. The Ardium Smart platform features SmartSound® iQ signal processing built on a high-resolution compression system. Together with BCDrive™ transducer technology, more patients can enjoy a seamless hearing experience through a clear and powerful signal.



## Clearer Sound with Less Risk for Feedback

The BCDrive transducer produces 30% less distortion compared to a traditional asymmetric transducer<sup>1</sup>. With advanced feedback management in both the sound processor and Fitting Software; Baha 5 Sound Processors deliver clearer sound with less risk for feedback.

30% less distortion

## Sound Clarity in All Environments

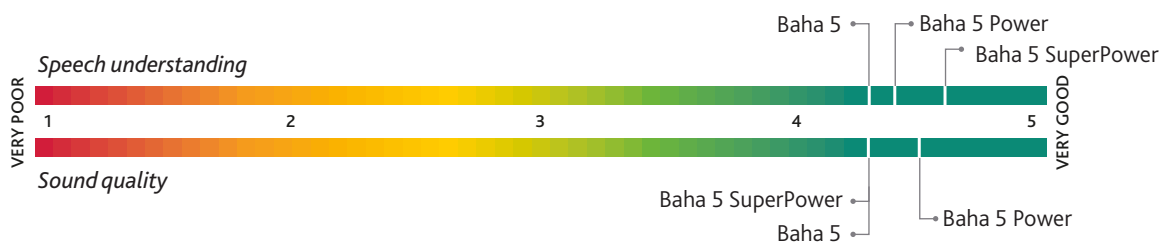
Our adaptive SmartSound iQ signal processing with Scene Classifier II delivers a seamless listening experience in all environments. The 17-channel wideband dynamic range compression system helps ensure a more exact fitting with less distortion for a clearer sound signal.



## Excellent Speech Understanding and Sound Quality

In listening tests, patients consistently rate speech understanding and sound quality with the Baha 5 Sound Processors as good to very good.<sup>9-11</sup>

On average, all processors rated  
**4.3 OR HIGHER**





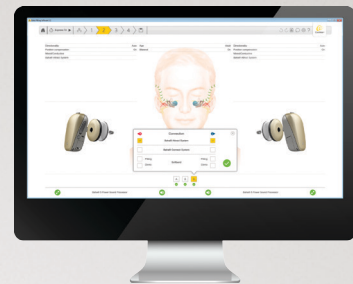




# One smart solution. The power to choose.



**Apps and True Wireless**



**Baha Fitting Software**







**Baha 5 Sound Processors**





	Baha 5 Sound Processor	Baha 5 Power	Baha 5 Super Power
			
Fitting range	Up to 45 dB SNHL	Up to 55 dB SNHL	Up to 65 dB SNHL
Size (H x W x D)	26 x 19 x 12 mm	36 x 22 x 13 mm	39 x 48 x 9 mm*
Weight (without battery)	9.8 g	17.2 g	9.8 g* Actuator unit 14.4 g
Battery type	312	675	Rechargeable, 2 sizes.
No. of programs	4	4	4
Visual status indicator	✗	✓	✓
Tamper-proof door	Available	Built-in	Built-in
Volume control	On apps and accessories	On device, apps and accessories	On device, apps and accessories
Platform	Ardium Smart Wireless	Ardium Smart Wireless	Ardium Smart Wireless
Signal processing	SmartSound iQ	SmartSound iQ	SmartSound iQ
Feedback management	Dual Track and Feedback Analyzer (in FS)	Dual Track and Feedback Analyzer (in FS)	Dual Track and Feedback Analyzer (in FS)
Wireless connectivity	True Wireless 2.4 GHz and Bluetooth Smart	True Wireless 2.4 GHz and Bluetooth Smart	True Wireless 2.4 GHz and Bluetooth Smart
Made for iPhone Hearing Device	✓	✓	✓
Apps	Baha 5 Smart App, Control App and Support App	Baha 5 Smart App, Control App and Support App	Baha 5 Smart App, Control App and Support App
Accessories	Mini Microphone 2, Mini Microphone 2+, TV Streamer, Phone Clip and Remote Control 2	Mini Microphone 2, Mini Microphone 2+, TV Streamer, Phone Clip and Remote Control 2	Mini Microphone 2, Mini Microphone 2+, TV Streamer, Phone Clip and Remote Control 2
FM Compatible	Through Mini Mic 2+	Through Mini Mic 2+	Through Mini Mic 2+
Wireless fitting	Airlink and Airlink 2	Airlink and Airlink 2	Airlink 2
Transducer	BCDrive	BCDrive	BCDrive
Colors			

	SP Magnet and BIM400 Implant Magnet	DermaLock Abutment (BA400)	BI300 Implant
			
Options	SP Magnet strengths 1-6	6, 8, 10, 12 & 14 mm	Length 3 & 4 mm
Recommended fitting time	4 weeks**	12 weeks	Diameter 4.5 mm
Surface technology	✗	DermaLock	Surface technology TiOblast
Removable	✓	✓	RFA ✓
MRI compatibility	Conditional at 1.5 Tesla	Conditional at 1.5 & 3 Tesla	MRI compatibility Conditional at 1.5 & 3 Tesla
RFA	On implant	On implant and abutment	
Colors			

\* BTE unit with compact rechargeable battery

\*\* Based on soft tissue healing

At Cochlear, we are committed to providing patients with the latest hearing technology, proven outcomes and options for a lifetime of better hearing. We do this by collaborating with healthcare professionals and listening to the people who rely on the Baha System to hear everyday.

The complete Baha 5 System is living proof of our commitment to innovation that matters. A full portfolio offering the smallest, smartest and most powerful sound processors, and excellent system and connection options backed by years of clinical evidence are just part of what makes Cochlear the smart choice in bone conduction.





*Baha users from around the world*



# Hear now. And always

As the global leader in implantable hearing solutions, Cochlear is dedicated to bringing the gift of sound to people with moderate to profound hearing loss. We have helped over 450,000 people of all ages live full and active lives by reconnecting them with family, friends and community.

We aim to give our recipients the best lifelong hearing experience and access to innovative future technologies. For our professional partners, we offer the industry's largest clinical, research and support networks.

That's why more people choose Cochlear than any other hearing implant company.

As your partner in hearing for life, Cochlear believes it is important that you understand not only the benefits, but also the potential risks associated with a Baha procedure.

You should talk to your hearing healthcare provider about who is a candidate for a Baha. Before any surgery, it is important to talk to your doctor about CDC guidelines for pre-surgical vaccinations. Baha is contraindicated for patients with inadequate bone quality or quantity to provide stability and support for the implant, or in patients who will be unable to maintain and clean the skin around the abutment. In the U.S., use of the implanted fixture is also contraindicated in children under age 5 years.

Baha implantation is a surgical procedure carries with it the risks typical of surgery. All surgical procedures include an element of risk, and it is impossible to guarantee success. The device may fail to osseointegrate for a number of reasons, including physiological and surgical issues as well as traumatic impact to the implant site. On rare occasions the skin around the abutment may become inflamed from a mild infection or the skin may grow back towards its original thickness.

For complete information regarding the risks and benefits of a Baha procedure, please refer to the Instructions for use for the Baha implant available at [www.Cochlear.com/US/Bahaindications](http://www.Cochlear.com/US/Bahaindications)

[www.Cochlear.com/US](http://www.Cochlear.com/US)

Follow us on   

**Cochlear Americas**  
13059 East Peakview Avenue  
Centennial, CO 80111 USA  
Telephone: 1 303 790 9010  
Support: 1 800 483 3123

**Cochlear Canada Inc.**  
2500-120 Adelaide Street West  
Toronto, ON M5H 1T1 Canada  
Telephone: 1 416 972 5082  
Fax: 1 416 972 5083

©Cochlear Limited 2016. All rights reserved. Hear now. And always and other trademarks and registered trademarks are the property of Cochlear Limited or Cochlear Bone Anchored Solutions AB. The names of actual companies and products mentioned herein may be the trademarks of their respective owners.

The Bluetooth® word mark and logos are registered trademarks owned by Bluetooth SIG, Inc. and any use of such marks by Cochlear is under license.

Apple, the Apple logo, iPhone, and iPod touch are trademarks of Apple Inc., registered in the U.S. and other countries. App Store is a service mark of Apple Inc.

© 2016 Google Inc. All rights reserved. Google Play is a trademark of Google Inc.



BUN440 ISS1 JUN16

## REFERENCES

1. Flynn MC. Smart and Small – innovative technologies behind the Cochlear Baha 5 Sound Processor. Cochlear Bone Anchored Solutions AB, 629761, 2015.
2. Norrman, J. Review of fitting ranges. Cochlear Bone Anchored Solutions AB, D773528, 2015.
3. Cire G. Comparison of Baha 5 SuperPower vs BP110 Power on Baha Attract System. Cochlear Bone Anchored Solutions AB, D836422, 2016.
4. Creasey D, Brassington W, William Carr, J. Patient benefits from a new bone conduction sound processor. Presented at the 5th International Congress on Bone Conduction Hearing and Related Technologies. Lake Louise, Canada, May 20-23 2015.
5. van Hoof M, Wigren S, Ivarsson Blechert J, Molin M, Joore MA, Hof JR, van Tongeren J, Mateijsen DJM, Bom SJ, Stalfors J, Eeg-Olofsson M, Deguine O, van der Rijt AJM, Flynn MC, Marco Algarra J, Stokroos RJ. A RCT of soft tissue preservation using a HA-coated abutment in percutaneous bone conduction hearing implant surgery – 1-year clinical outcomes. 14th International Conference on Cochlear Implants and Other Implantable Technologies, May 2016, Toronto, Canada. Poster presentation.
6. Cochlear Bone Anchored Solutions AB, Mölnlycke, Sweden. Clinical and health economic evaluation with a new Baha® abutment combined with a minimally invasive surgical technique. In: ClinicalTrials.gov [Internet]. Bethesda (MD): National Library of Medicine (US). [Cited 2016 Jan 6]. Available from: <https://clinicaltrials.gov/ct2/show/NCT01796236>. NLM Identifier: NCT01796236.
7. van Hoof M, Wigren S, Duimel H, Savelkoul PH, Flynn M, Stokroos RJ. Can the hydroxyapatite-coated skin-penetrating abutment for bone conduction hearing implants integrate with the surrounding skin? Front Surg. 2015 Sep 14;2:45.
8. Cochlear Bone Anchored Solutions AB, Mölnlycke, Sweden. Long term stability, survival and tolerability of a (novel) Baha® implant system. In: ClinicalTrials.gov [Internet]. Bethesda (MD): National Library of Medicine (US). [Cited 2016 Jan 6]. Available from: <https://clinicaltrials.gov/ct2/show/NCT02092610>. NLM Identifier: NCT02092610.
9. Hedin A, Andersson J, Agat T, Hoffmann J, Björk T, Flynn M. Summary of the Cochlear Baha 5 Clinical Development. Cochlear Bone Anchored Solutions AB, 630206, 2015.
10. Hedin A, Andersson J, Agat T, Hoffmann J, Björk T, Ivarsson I. Summary of the Cochlear Baha 5 Power Clinical Development. Cochlear Bone Anchored Solutions AB, D831708, 2016.
11. Hedin A, Andersson J, Agat T, Hoffmann J, Björk T, Ivarsson I. Summary of the Cochlear Baha 5 SuperPower Clinical Development. Cochlear Bone Anchored Solutions AB, D831707, 2016.

