

Copyright © 2018 Rexton. All rights reserved.

The **Bluetooth®** word mark and logos are owned by the Bluetooth SIG, Inc. and any use of such marks by Sivantos, Inc. is under license. Other trademarks and trade names are those of their respective owners.

Manufacturer and Local Contact

Rexton

A Division of Sivantos, Inc.

P.O. Box 59008

Minneapolis, MN 55459

Hearing Instruments Made in Singapore
RX18509 rev 10/18 part # 10240484 3.0

Discover the smart choice.

REXTON

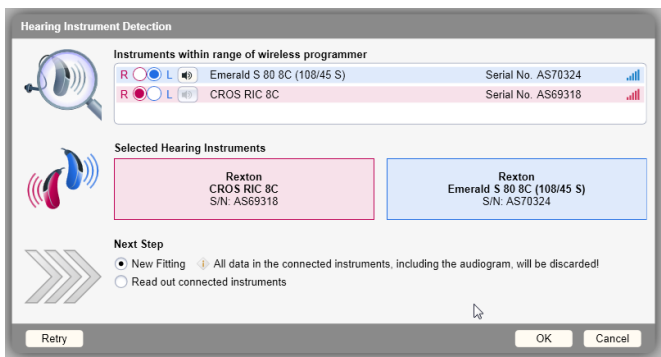
First Fit™ Guide for CROS RIC 8C & CROS inoX 8C

For MyCore 8C hearing instruments

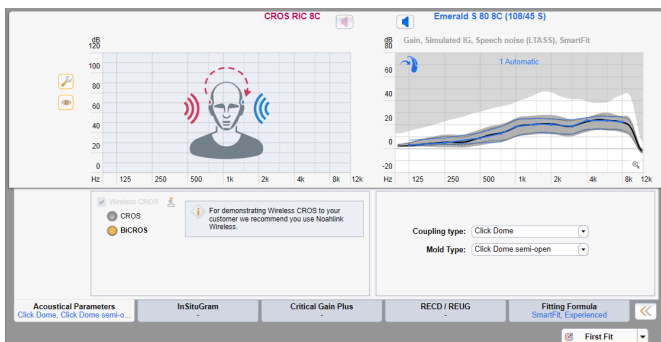


1. Enter Client Information and Audiometric Information via Connexx® Portal Page or NOAH™.

2. Connect both the hearing aid and the CROS unit to your programming device and select **Detect Connected Hearing Instruments**.

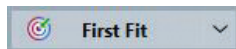


3. Enter appropriate selection of Acoustical Parameters and select Fitting Formula (Smart fit and Experience Level, i.e. New, Experienced, or Power). Tabs located at bottom of screen.



4. Select First Fit to apply chosen parameters and to complete the First Fit process.

- Orange checkmark will appear next to First Fit menu.



5. Select **My Voice** tab and **Prepare Training** by following on-screen instructions.
Not available for CROS inoX

Prepare Training

6. Select **Fine Tuning** and **Noise Reduction/Microphone**. If necessary, adjust the sensitivity of the CROS microphone in relation to the hearing aid microphone.

Fine Tuning

Input Mode

Mode : Microphone + CROS

☐ Enable Remote Mic

Remote Level

-12dB

7. Select Configuration

Configuration

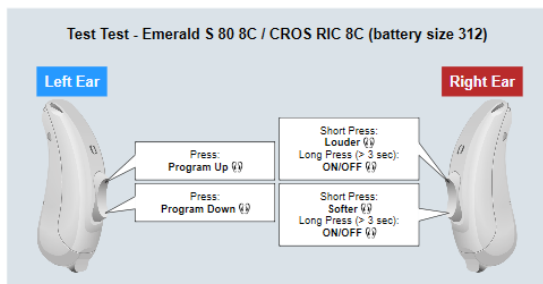
- **CROS RIC 8C:** the rocker switch controls volume only. It may also be turned off by pressing and holding the rocker switch.
- **Hearing Instrument:** Select the desired function(s) for the hearing aid.
- **System Sounds:** Configure Alert Tones

8. Select **Documentation Task Card** on Primary Navigation Bar.



Documentation

- Instruction and Documentation information may be saved as PDF, sent via email, or printed.



9. Save Session

- Select "X" at top right of screen or select drop down item under File.
- Disconnect hearing instruments.