



SONIC | **captivate.**

**Captivate 100|80|60**

**captivate™**

[www.sonici.us](http://www.sonici.us)

**SONIC**  
Everyday Sounds Better



**What Life Sounds Like**

[www.sonici.us](http://www.sonici.us)

**SONIC**  
Everyday Sounds Better

## Continuing 4S Foundation

Sonic is dedicated to improving life through enhanced hearing by constantly focusing on our 4S Foundation

Sound that's natural  
Speech understanding in noise  
Simplicity in all we do  
Style that stands out

With Captivate,  
that adds up to  
a better hearing  
experience

[www.sonici.us](http://www.sonici.us)



## Revolutionary SoundDNA Platform



**SoundDNA** Platform

[www.sonici.us](http://www.sonici.us)

From clarifying conversations to streaming online entertainment, Captivate immerses patients in the sounds of life.



# SoundDNA

## 2019 SoundDNA Updates

- More Processing Power
- New! Algorithm
- New! Setting
- New! Feature
- New! Benefits
- More Robust Offerings Overall



[www.sonici.us](http://www.sonici.us)



## Sound That's Natural



[www.sonici.us](http://www.sonici.us)



## Listen with Ease

With Captivate, Sonic delivers a natural sound with several technologies in play

SmartCompress

**Adaptive Feedback Canceller Pro**

Frequency Transfer

Extended Dynamic Range

SmartMusic



[www.sonici.us](http://www.sonici.us)



## A More Open Fit With Less Risk of Feedback

**New!** Algorithm exclusive to 2019 Products on the SoundDNA Platform

1 Feedback Management system with 2 technologies



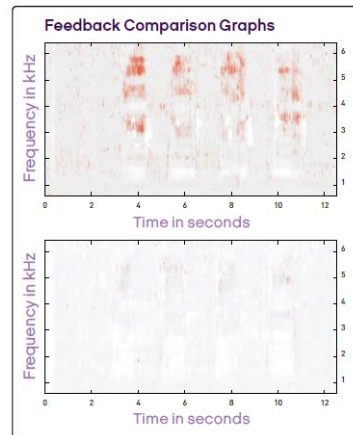
[www.sonici.us](http://www.sonici.us)



# AFC Pro Advantage

- Fewer distractions and interruptions from the annoyance of feedback in both stable and changing conditions
- A better target match, for improved audibility of soft speech sounds
- More open fittings for a natural, own-voice sound

[www.sonici.us](http://www.sonici.us)



**SONIC**  
Everyday Sounds Better

## Speech Understanding in Noise



[www.sonici.us](http://www.sonici.us)

**SONIC**  
Everyday Sounds Better

# Hear Conversations More Clearly in Noise

With Captivate, Sonic delivers what life sounds like in noise

## **SPiN Management**

Binaural Noise Management

Impulse Noise Reduction

Soft Noise Reduction

Wind Noise Reduction

Tinnitus SoundSupport

[www.sonici.us](http://www.sonici.us)



## SPiN Management

- SPiN Directionality
  - Uses null steering to select the microphones' polar patterns that will produce the optimal SNR in 16 independent frequency bands
- SPiN Noise Reduction
  - Designed to reduce the gain of noise compared to speech operating in 16 independent frequency bands
- SPiN Engage
  - **New! Very High setting**
    - Systems engage immediately at the onset of soft noise levels while the SNR is still high

[www.sonici.us](http://www.sonici.us)



## SPiN Management Advantage

Better speech understanding in noisy listening environments

Settings that start at higher SNR levels to reduce background noise

Personalized to meet patients' preferences

[www.sonici.us](http://www.sonici.us)



**Simplicity  
In All We Do**



[www.sonici.us](http://www.sonici.us)



# Make Life Easier with Captivate

Captivate delivers solutions that make sense

**Lithium-ion Rechargeability**

Dual-Radio System

If This Then That

**EXPRESSfit® Pro**

[www.sonici.us](http://www.sonici.us)



# Recharge Your Day, Just Like That



[www.sonici.us](http://www.sonici.us)

New! Lithium-ion  
rechargeable battery  
solution

Robust battery life capacity  
for a full day's use  
following a short charging  
time





# The Captivate Li-ion System

New model

- miniRITE T R

Available in all Captivate levels

Charger is black - unbranded

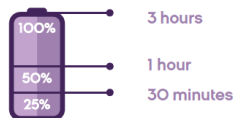


[www.sonicl.us](http://www.sonicl.us)



## Why Offer This Solution?

Charging is fast, reaching full capacity in 3 hours.\*



\* Charging time may vary.

### Overall Benefits

312+ Li-ion rechargeable battery =  
More power in a smaller package

### End User Benefits

Rechargeable, full-featured hearing aid in a stylish package with longer wearing time and shorter charging time

### Manufacturer/HCP Benefits

Meets another market need for a Li-ion rechargeable battery solution

[www.sonicl.us](http://www.sonicl.us)



# EXPRESSfit® Pro Delivers...Again

Support for new Captivate products

Updated Transfer Fitting feature

Best Fit Fast SE improvements

Updated SPiN Management features

New! Battery Life Status feature



[www.sonici.us](http://www.sonici.us)



## Style That Stands Out

Captivate. Distinctive Style.



[www.sonici.us](http://www.sonici.us)



# Flexibility in Focus

4 models

miniRITE, miniRITE T, miniRITE T R, BTE 105

3 performance levels – 100|80|60

7 color options available



\* Gold color available in the Captivate<sup>100</sup> miniRITE only.

## Design is in the Details of Captivate



1. **Dual Covered Microphones**
  - » Allow for sophisticated directional features to enhance performance in noise
  - » Keep unwanted debris and moisture from entering the device
2. **Program Button**
  - » Provides easy access for up to four listening memories
  - » Provides push-button volume control (miniRITE only)
3. **Volume Control**
  - » Programmable range
  - » Configurable alerting tones provide audible cue as volume is changed
4. **Wireless Connectivity**
  - » NFMI enables binaural communication between devices
  - » 2.4 GHz technology provides connectivity to external audio sources (mobile phone, television, computer, etc.)
5. **Battery Compartment: miniRITE, miniRITE T, BTE 105**
  - » Easy-open design
  - » Integrated on/off switch
  - » Size 13 (BTE 105) or 312 (miniRITE, miniRITE T) battery
  - » Tamper-resistant lock keeps the battery secure from children
6. **Acoustic Options miniFIT System**
  - » Four receiver sizes in four lengths (miniRITE, miniRITE T, miniRITE T R) [BTE 105 only]
  - » Custom Molds and miniFIT Domes available in a variety of sizes and configurations
7. **Rechargeability**
  - » Lithium-ion rechargeable solution (miniRITE T R only)
  - » ZPower optional silver-zinc rechargeable upgrade kit (miniRITE only)
8. **Ingress Protection Rating**
  - » Hydrophobic coating and overall design protects against dust and continuous immersion in three feet of water or more
  - » IP68
9. **ProWax miniFIT System**
  - » Protects receiver from moisture and cerumen (miniRITE, miniRITE T, miniRITE T R)
  - » Replaceable by the patient
10. **Telecoil**
  - » Telecoil provides clear telephone reception (miniRITE T, miniRITE T R, BTE 105)
11. **If This Then That (iFTTT)**
  - » Connects Captivate instruments to other internet devices via Sonic Go service
12. **DAI/FM**
  - » Optional adapters for BTE 105 only

\* Not all features are available on all models—refer to the chart in the back of this guide for details.

# Model Overview



miniRITE



miniRITE T



miniRITE T R



BTE IO5

	312	312	312	13
Battery Size	312	312	312	13
Power Model	Power Receiver	Power Receiver	Power Receiver	
Directional Microphones	■	■	■	■
Program Button	■	■	■	■
Volume Control	□	□	□	□
Telecoil		■	■	■
Wireless Connectivity	■	■	■	■
Receiver Sizes	Small (60) Medium (85) Power (100) Power (105)	Small (60) Medium (85) Power (100) Power (105)	Small (60) Medium (85) Power (100) Power (105)	
Earhook				□
Thin Tube				■
IP Rating	IP68	IP68	IP68	IP68
Tinnitus SoundSupport	■	■	■	■
Bluetooth Internet Connection*	■	■	■	■
DAI/FM				■
Li-ion Rechargeability			■	
ZPower Rechargeability	□			

■ Standard □ Optional

\* Requires SoundLink 2 App.

**captivate**<sup>TM</sup>  
What Life Sounds Like



www.sonicl.us

**SONIC**  
Everyday Sounds Better