



SONIC | **captivate.**



CV 100|80|60|40|20
Introduction



Learner Outcomes

- Describe how SmartCompress technology can control compression in speech-in-noise environments and control gain in non-speech environments.
- Explain how to manage acoustic feedback with the Adaptive Feedback Canceller Pro in Captivate hearing aids.
- List and describe all the available features and technology in Sonic's Captivate hearing aids.

www.sonici.com

captivate.

What Life Sounds Like

www.sonici.com



Continuing 4S Foundation

Sonic is dedicated to improving life through enhanced hearing by constantly focusing on our 4S Foundation

Sound that's natural
Speech understanding in noise
Simplicity in all we do
Style that stands out

**With Captivate,
that adds up to a
better hearing
experience**

www.sonici.com



Revolutionary SoundDNA Platform



**From clarifying
conversations to
streaming online
entertainment,
Captivate immerses
patients in the
sounds of life.**

SoundDNA Platform

www.sonici.com



Updates to Success

A Quick Look Back to 2019

- More Processing Power
- New Algorithm → AFC Pro
- New Setting → SPiN Engage
- New Feature → Li-ion
- New Benefits → SmartCompress
- Robust Offering → 4 models,
3 levels



www.sonici.com



Updates to Success

2020 Captivate Updates

- New! 2 additional Tech Levels 40|20
- Includes all 4 models in each Tech Level
- Addresses needs AND budgets
- Plus! Refreshed App Design



www.sonici.com



Sound That's Natural

www.sonici.com



Listen with Ease

With Captivate, Sonic delivers a natural sound with several technologies in play

SmartCompress

Adaptive Feedback Canceller Pro

Frequency Transfer

Extended Dynamic Range

SmartMusic

www.sonici.com

SmartCompress

Captivate 100|80|60

www.sonici.com

SmartCompress



www.sonici.com

**Configurable adaptive
compression system for
intelligent amplification
in noise**

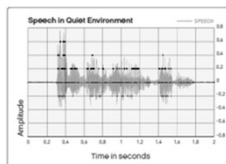
**Natural and detailed
amplification for your
patients**



Sonic's Most Recent Solution

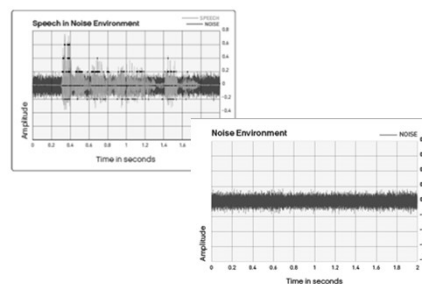
We have used Speech Variable Processing (SVP) to apply amplification in Speech in Quiet

- SVP measures and applies gain to the wideband acoustic signal
- Does not break up incoming signal into separate frequency regions
- Uses Phoneme Focus and Envelope Focus to address auditory resolution needs



www.sonici.com

- We have used Environment Classification to assist SVP in identifying all other changing environments



SVP with SmartCompress - Overview

In other words...

- SVP is optimized for Speech in Quiet
- SVP with SmartCompress optimizes all other listening environments

SmartCompress allows the system to intelligently overcome the challenges associated with rapidly changing listening environments for a natural, instinctive hearing experience

No longer a need for Environment Classification with SmartCompress!

www.sonici.com

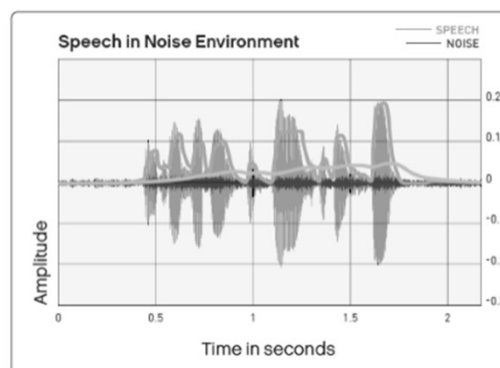


SmartCompress - How does it do it?

SmartCompress uses two SNR level estimators, compared to one in traditional systems

- Green – fast phonemic estimator
- Blue – slow, long-term estimator

Provides accurate measurement of environmental changes in real time



www.sonici.com



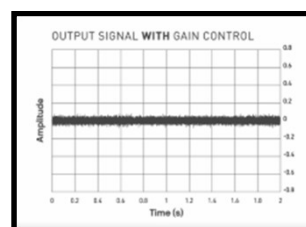
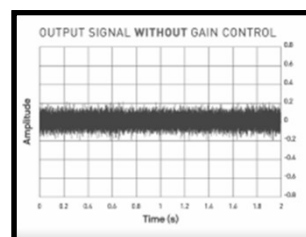
Very low SNR



**Quiet and Noise-only environments
(Without speech)**

SmartCompress via the Gain Control applies less gain to the incoming signal

Offers greater listening comfort in non-speech listening environments



Low SNR



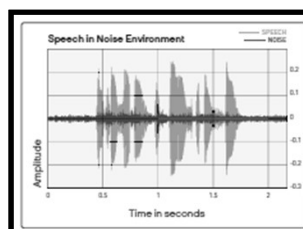
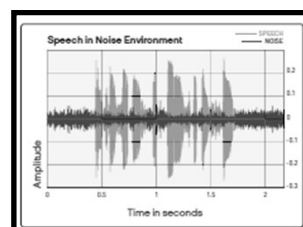
Speech-in-noise environments

SmartCompress via the Compression Control reduces compression

Minimizes the amplification of noise following short pauses in speech or even between phonemes

Improves the output SNR

Supports speech and listening comfort in complex environments



Summary: SmartCompress



Automatic

- Robust analysis of environmental changes
- Reacts instantaneously, not based on rigid environment classification in rapidly fluctuating environments

Adaptive

- Tracks ongoing changes in signal-to-noise ratio (SNR)
- Uses SNR information to guide adaptive compression system
- Controls amplification based on the signal type
- Intelligently adjusts the gain

Flexible

- Easily personalized for individual needs in fitting software

www.sonici.com

Check out Sonic's
Spotlight Paper on
SmartCompress



Adaptive Feedback Canceller Pro

Captivate 100|80|60|40|20

www.sonici.com

A More Open Fit With Less Risk of Feedback

New! Algorithm exclusive to 2019 Products on the SoundDNA Platform

1 Feedback Management system with 2 technologies



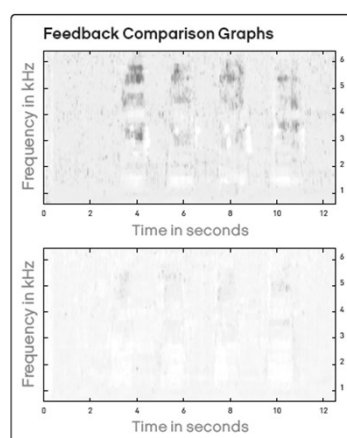
www.sonici.com

SONIC
Everyday Sounds Better

AFC Pro Advantage

- Fewer distractions and interruptions from the annoyance of feedback in both stable and changing conditions
- Improved audibility of soft speech sounds, for a better target match
- More open fittings for a natural, own-voice sound

www.sonici.com



SONIC
Everyday Sounds Better

3 Simple Goals for Feedback Management

1 - Decrease occurrence/annoyance of audible feedback

2 - Maintain speech intelligibility

3 - Successful Open-fittings | Sound quality

www.sonici.com



New technology: STM Processing

AFC Pro is an adaptive phase cancellation system combined with a 2nd anti-feedback system

2nd system is new technology

Spectro-Temporal Modulation

- STM Processing

Designed to attenuate feedback from fast-changing conditions

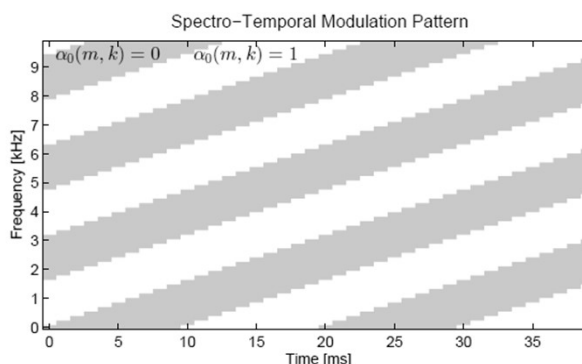
www.sonici.com



STM Processing

What is Spectro-Temporal Modulation?

- An added signal that attenuates the feedback path
- Applying STM prevents feedback from occurring
- Replaces traditional loud/annoying feedback whistling sounds with soft/non-intrusive STM processed sounds



M. Guo and B. Kuenzle, 2017

www.sonici.com



STM Processing - Conclusions

Conclusion 1: STM – applied only when the adaptive filter is insufficient to cancel feedback

Conclusion 2: STM – improves feedback cancellation

- In very challenging dynamic situations
- During rapid feedback path changes
- Without changing the feedback performance in other situations

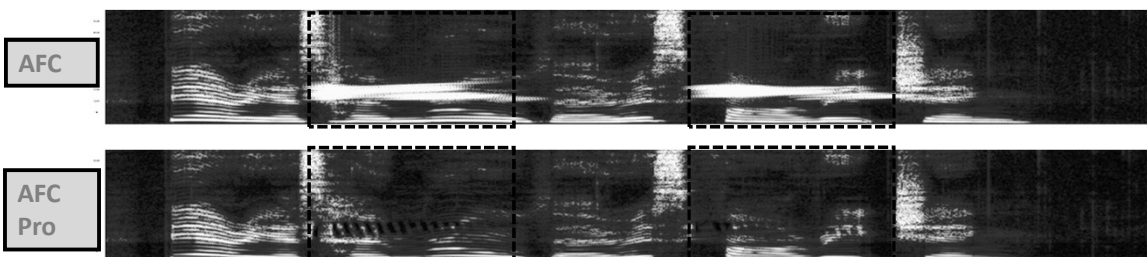
Conclusion 3: Simulations show STM is able to keep the hearing aid system stable to avoid feedback whistling sounds

M. Guo and B. Kuenzle, 2017

www.sonici.com



Spectrogram examples



AFC Pro in EXPRESSfit® Pro



**AFC Pro is located in
the Feedback Manager
screen**

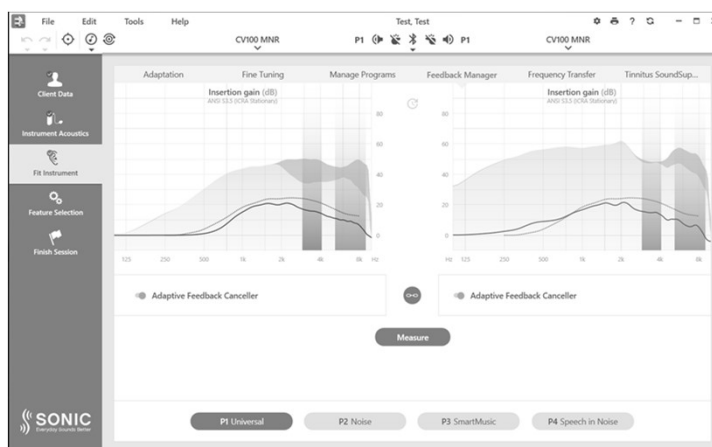
Easy to measure

Easy to apply

www.sonici.com

SONIC
Everyday Sounds Better

AFC Pro in EXPRESSfit® Pro



AFC Pro is not active when there is no feedback risk

- **Decreases sound artifacts that may occur**
- **Maximizes sound quality**
- **Uses a feedback monitor to identify sounds previously amplified**
 - Tonal sounds, music

3 Simple Goals for Feedback Management

- ✓ **1 - Decrease occurrence/annoyance of audible feedback**
- ✓ **2 - Maintain speech intelligibility**
- ✓ **3 - Successful Open-fittings | Sound quality**

AFC Pro video

www.sonici.com

Frequency Transfer

Captivate 100|80|60|40

www.sonici.com

Frequency Transfer

**Helps identify
consonants for patients
with severe high-
frequency hearing losses**

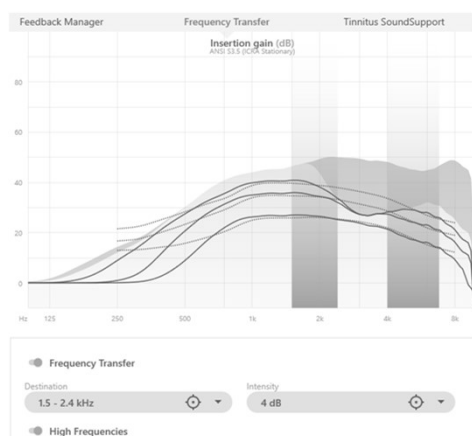
**Access via Frequency
Transfer control in
EXPRESSfit® Pro**



www.sonici.com

SONIC
Everyday Sounds Better

Frequency Transfer



www.sonici.com

10 Destination Regions

- Adjusts HF source and LF destination regions

7 Intensity Settings

- Adjusts the strength of the HF sounds (source) when mixed with the LF sounds (destination)

High Frequency Attenuation

- Turns gain in the HF bands above the destination on or off

SONIC
Everyday Sounds Better

Extended Dynamic Range

Captivate 100

www.sonici.com

Keep Loud Speech Clear



**Premium feature to keep
loud sounds clear in
challenging listening
environment**

**Specifically designed for
signals with high
intensity**

www.sonici.com



Extended Dynamic Range - Summary

**Adaptively extends
dynamic input range**

**Expands to growing
sound levels only as
needed**

- Upper limit depends on input level of speech signal (from 95-113 dB SPL)

**Allows loud peaks to be
amplified with less risk
of distortion**

For everyday sounds

**Available in Captivate¹⁰⁰
only**

www.sonici.com



SmartMusic

Captivate 100|80|60

www.sonici.com

Live Music at its Best

Greater enjoyment of live music

Enthusiasts and musicians alike can enjoy clear sounding music again



www.sonici.com

SONIC
Everyday Sounds Better

4 Components to SmartMusic

Fixed Extended Dynamic Range

- Increases limit at the input to a fixed 113 dB SPL

Speech Variable Processing

- Maintains balance between harmonics

Wideband Frequency Response

- Important for perceived naturalness of music

Controls

- Fixed Hypercardioid polar setting
- Position of null does not change
- Eliminates noises from behind
- Concentrate on what's on stage

www.sonici.com

SONIC
Everyday Sounds Better

Speech Understanding in Noise

www.sonici.com



Hear Conversations More Clearly in Noise

**With Captivate, Sonic delivers what life sounds like
in noise**

SPiN Management

Binaural Noise Management

Impulse Noise Reduction

Soft Noise Reduction

Wind Noise Reduction

Tinnitus SoundSupport

www.sonici.com

SPiN Management

3 Technologies: CV 100|80|60

2 Technologies: CV 40|20

www.sonici.com

Importance of the SNR

What's the best thing we can do for our patients?

Improve the SNR!

- Hearing impaired persons need a significantly greater signal-to-noise ratio (SNR) advantage over persons with normal hearing in order to understand an equal amount of speech

How? Noise Reduction Technologies

- Directional Microphones
- Digital Noise Reduction (DNR)

www.sonici.com



SPiN Management - Overview

Speech in Noise (SPiN) Management includes up to three technologies

- SPiN Directionality
- SPiN Noise Reduction
- SPiN Engage*

*Captive 100|80|60 Only

www.sonici.com

Offers a completely new automatic, adaptive and multiband design

Designed to enhance speech, reduce noise and optimize the control of it all



SPiN Management

- **SPiN Directionality**
 - Uses null steering to select the microphones' polar patterns that will produce the optimal SNR in 16 independent frequency bands
- **SPiN Noise Reduction**
 - Designed to reduce the gain of noise compared to speech operating in 16 independent frequency bands
- **SPiN Engage**
 - Informs Directionality and NR systems how soon to activate
 - Premium setting → Not available in **CV 40|20**

www.sonici.com



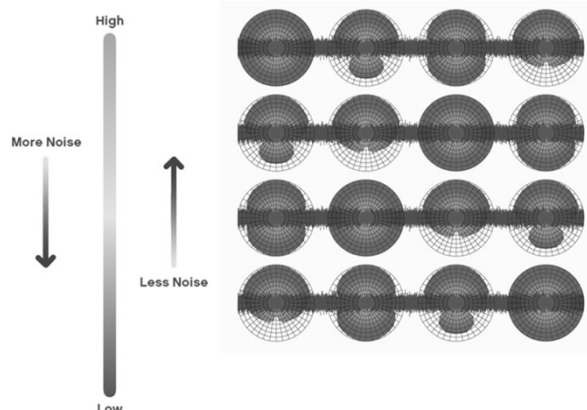
SPiN Engage

3rd component of SPiN Management

Determines at which signal-to-noise ratio SPiN Directionality and SPiN Noise Reduction will adjust to the environment

Works within the same multiband design

Coordinates the onset of directionality and noise reduction as the SNR fluctuates in 16 independent frequency bands



www.sonici.com

SONIC
Everyday Sounds Better

SPiN Management Advantage

Better speech understanding in noisy listening environments

Settings that start at higher SNR levels to reduce background noise

Personalized to meet patients' preferences

Check Out Sonic's Spotlight Paper on SPiN Management

www.sonici.com

Binaural Noise Management

Captivate 100|80

www.sonici.com

Relief From Distractions



www.sonici.com

**Support your patients
who encounter situations
with distracting, uneven
noise from side to side**

Available in Captivate^{100|80}

 **SONIC**
Everyday Sounds Better

Binaural Noise Management

Imagine this listening scenario

- **Summer day, driving in your car with the window down**
 - Having a conversation with a friend, with the radio on, plus wind
- **In environments with uneven noise, we naturally focus attention on the better side and actively mentally suppress the noise on the opposite side**
- **We do this to take advantage of the better audibility in one ear**

www.sonici.com

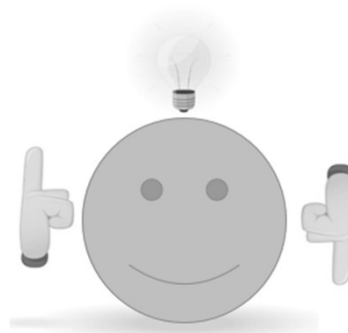


Binaural Noise Management

Activates when noise levels become significantly different between ears

Shifts the hearing aid response into a mode that fully activates the NR system on the side with excessive noise

Reduces gain and fully activates the NR system on the opposite side



www.sonici.com



Further Relief from Distractions

Captivate 100|80|60|40|20

www.sonici.com

Nobody Wants Noise

Impulse Noise Reduction*

- Lessens the discomfort of sudden, loud sounds

Soft Noise Reduction

- Reduces those low-level noises without affecting speech

Wind Noise Reduction

- Adjusts to outside activities by monitoring the environment and preventing the rush of wind from being amplified

*Not available in CV 20

www.sonici.com



Tinnitus SoundSupport

Captivate 100|80|60|40|20

www.sonici.com

Customizable Relief Sounds



www.sonici.com

Aims to reduce your patient's perception of tinnitus by providing amplification and generating sound relief

Available in all Captivate levels

 **SONIC**
Everyday Sounds Better

Tinnitus SoundSupport

Offers the following tinnitus relief sound options:

- 4 broadband sounds

White Noise

Pink Noise

Red Noise

Shaped to
audiogram

- 3 nature-like sounds

Ocean 1

Ocean 2

Ocean 3

www.sonici.com



Control Tinnitus Sounds - App

**Sonic SoundLink 2
App**

**Adjust Tinnitus
volume or mute**

**Modify Tinnitus
sound by changing
its modulation rate
or frequency
response**



Simplicity In All We Do

www.sonici.com



Simplify, with Captivate

Captivate delivers solutions that make sense

Lithium-ion Rechargeability

Dual-Radio System

If This Then That

Low Frequency Enhancement

Binaural Coordination & Synchronization

EXPRESSfit® Pro

www.sonici.com

Recharge Your Day, Just Like That



www.sonici.com

**Lithium-ion rechargeable
battery solution**

Available in CV 40|20!

**Robust battery life
capacity for a full day's
use following a short
charging time**



The Captivate Li-ion System

Dedicated model

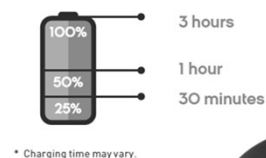
- miniRITE T R

Available in ALL Captivate levels

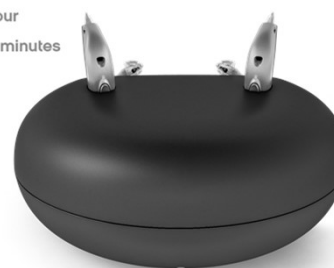
- CV 100|80|60|40|20

Charger is black

Charging is fast, reaching full
capacity in 3 hours.*



* Charging time may vary.



www.sonici.com



Lithium-ion

Captivate miniRITE T R

Does not compromise rechargeability for size

Small, stylish, modern receiver-in-the-ear hearing instrument

- Suitable for mild to profound hearing losses
- Includes telecoil
- Includes double push button

www.sonici.com



Made for
 iPhone | iPad | iPod

SONIC
 Everyday Sounds Better

Charger Overview

- Inductive technology that allows contactless charging of the hearing instrument via induction coil
- The magnetic connection in the charger prevents the hearing instruments from falling out
- When the hearing instruments are inserted into the charger, it automatically starts charging
- The hearing instruments turn ON when they are removed from the charger



www.sonici.com

SONIC
 Everyday Sounds Better

Dual-Radio System

Captivate 100|80|60|40|20

www.sonici.com

Wonderfully Wireless



www.sonici.com

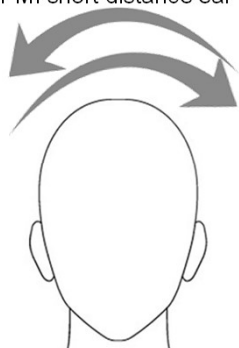
**Wireless connectivity is
a way of life for today's
hearing aid users**

 **SONIC**
Everyday Sounds Better

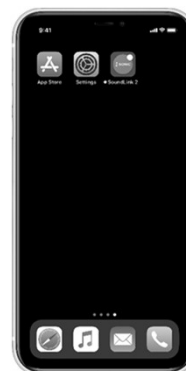
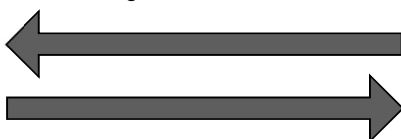
Dual-Radio Wireless Technology

Two wireless systems integrated into one hearing aid

a) NFMI short distance ear-to-ear



b) 2.4 GHz long distance direct-to-hearing aid



www.sonici.com



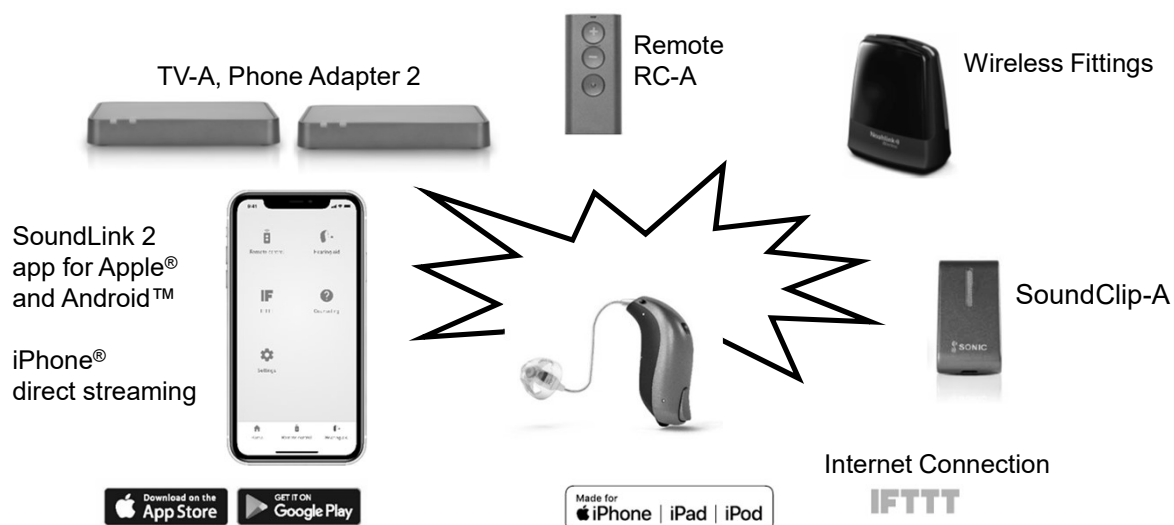
SoundLink 2 App

- Controls wireless operations like volume and program change and more
- Compatible with an iPhone® or Android™ smartphone¹
- Many conveniences such as “Find My Hearing Aid,” advanced Tinnitus SoundSupport controls, battery life percentage indicators, etc.



¹ Captivate is a Made for iPhone® hearing aid that allows you to talk on the phone, stream stereo music, and stream video sound directly to your hearing aid. In addition, download the free SoundLink 2 app to control your hearing aid over your iPhone, iPad®, iPod touch®, and Android™ smartphones and tablets. For information on compatibility, please visit www.sonici.global/compatibility.

SoundDNA Connectivity Portfolio



Updates to SoundLink 2

Refreshed Design

- New and improved user interface, coloring and controls
- Demo mode
- Support for CV 40|20

Battery level indicator in %

- Battery level shown with 1% resolution for Li-ion battery only (10% otherwise)

www.sonici.com



If This Then That

Captivate 100|80|60|40|20

www.sonici.com

Make the Most of Smart Technology



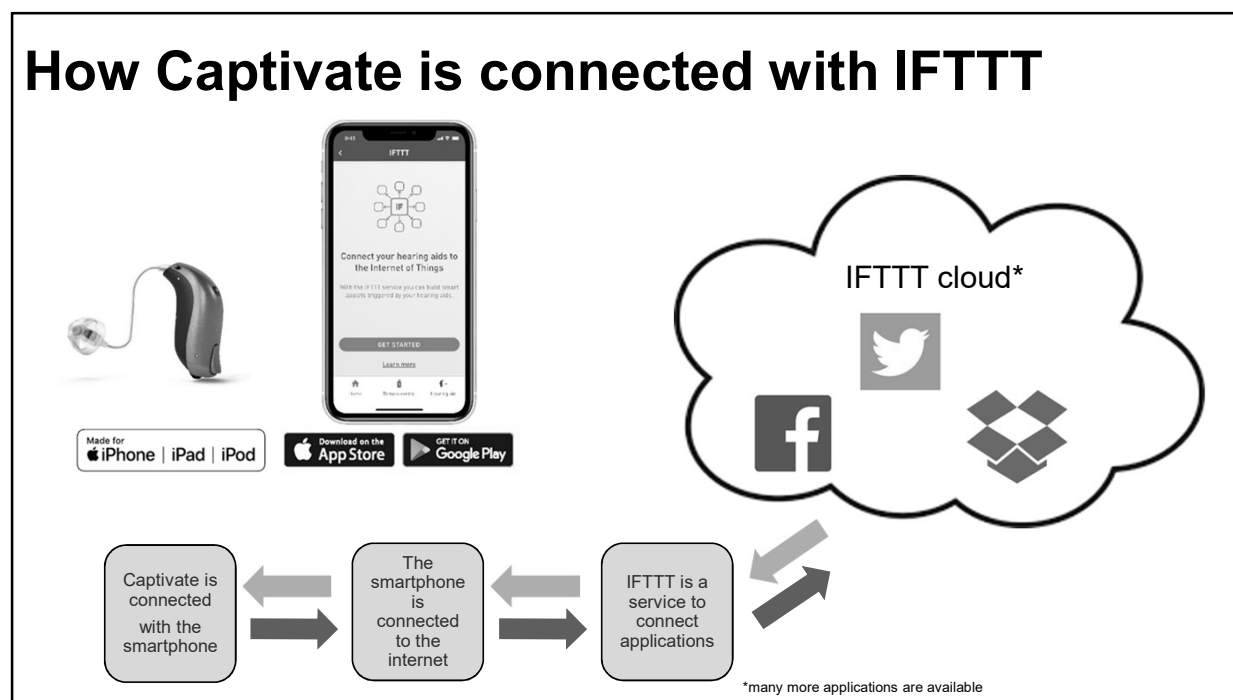
www.sonici.com

**If This Then That brings
the Internet of Things to
Captivate**

**More than 550 internet-
connected devices and
services**

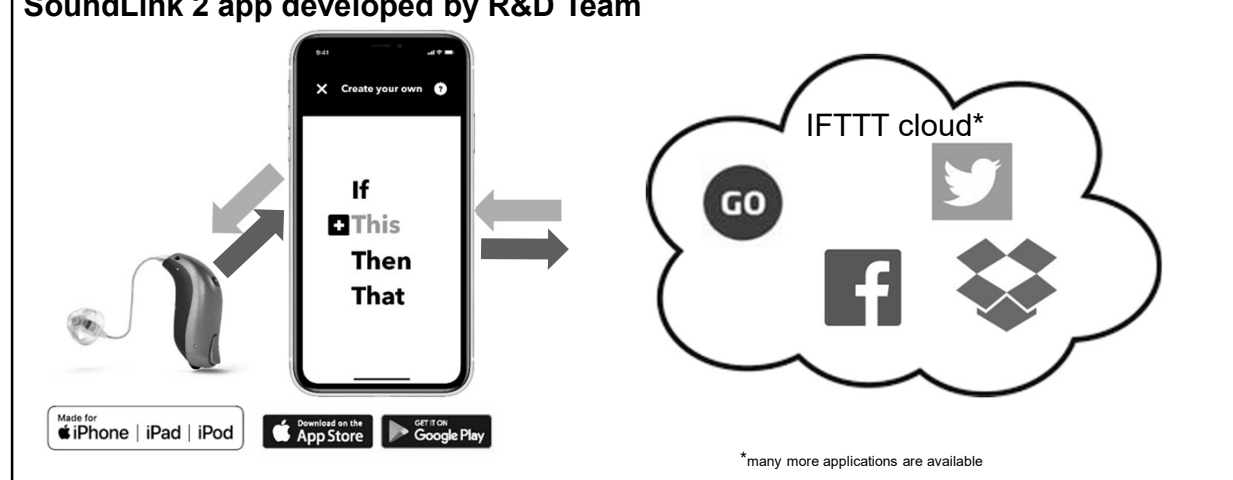
 **SONIC**
Everyday Sounds Better

How Captivate is connected with IFTTT



Captivate and GO Service

GO service is the interface between Captivate and other services in IFTTT
SoundLink 2 app developed by R&D Team



Low Frequency Enhancement

Captivate 100|80|60|40|20

www.sonici.com

Deep Bass Dynamics

Add low frequencies into
direct audio streaming
for a high fidelity signal

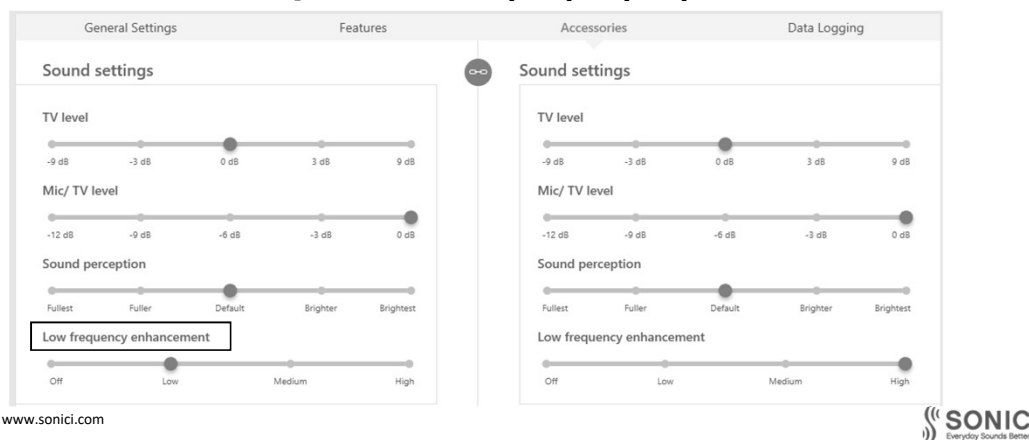


www.sonici.com

 **SONIC**
Everyday Sounds Better

Low Frequency Enhancement

Available in Captivate 100|80|60|40|20



Two Ears Working As One

Captivate 100|80|60|40|20

www.sonici.com

The World of Binaural

Binaural Coordination

- **Automatically share information between left and right ears**
- **Natural, listening experience patients forget they're wearing devices**

Binaural Synchronization

- **Volume and program changes made to one ear are simultaneously made on the other**
- **Mute features easily synchronizes with the touch of one button**

www.sonici.com

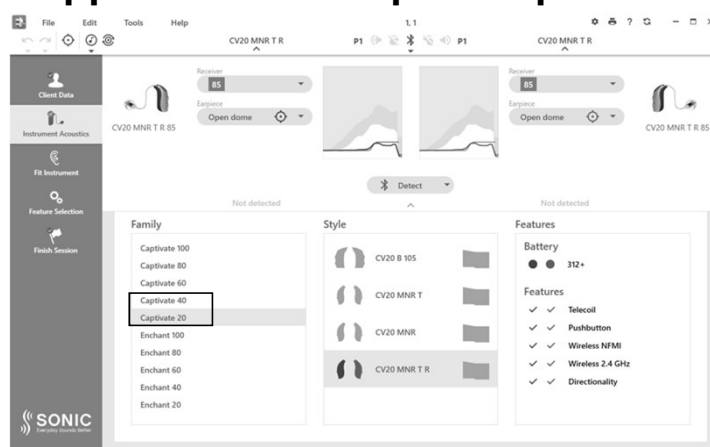


EXPRESSfit[®] Pro

www.sonici.com

EXPRESSfit® Pro Delivers...Again

Support for new Captivate products



Stunningly Simple

- Adaptation Manager
- Transfer Fitting
- Real Ear Fit
- SoundStudio
- Noahlink Wireless capability

Captivate 100|80|60|40|20

www.sonici.com



captivate.

Style That Stands Out

Captivate. Distinctive Style.

www.sonici.com

SONIC
Everything Sounds Better

Flexibility in Focus

4 models – miniRITE, miniRITE T, miniRITE T R, BTE 105

5 performance levels – 100|80|60|40|20

7 color options available



* Gold color available in the Captivate¹⁰⁰ miniRITE only.

Design is in the Details of Captivate



1. **Dual Covered Microphones**
 - » Allow for sophisticated directional features to enhance performance in noise
 - » Keep unwanted debris and moisture from entering the device
2. **Program Button**
 - » Provides easy access for up to four listening memories
 - » Provides push-button volume control (miniRITE only)
3. **Volume Control**
 - » Programmable range
 - » Configurable alerting tones provide audible cue as volume is changed
4. **Wireless Connectivity**
 - » NFMI enables binaural communication between devices
 - » 2.4 GHz technology provides connectivity to external audio sources (mobile phone, television, computer, etc.)
5. **Battery Compartment: miniRITE, miniRITE T, BTE 105**
 - » Easy-open design
 - » Integrated on/off switch
 - » Size 13 (BTE 105) or 312 (miniRITE, miniRITE T) battery
 - » Tamper-resistant lock keeps the battery secure from children
6. **Acoustic Options miniFIT System**
 - » Four receiver sizes in four lengths (miniRITE, miniRITE T, miniRITE T R)
 - » Earhook or Thin Tube options (BTE 105 only)
 - » Custom Molds and miniFIT Domes available in a variety of sizes and configurations
7. **Rechargeability**
 - » Lithium-ion rechargeable solution (miniRITE T R only)
8. **Ingress Protection Rating**
 - » Hydrophobic coating and overall design protects against dust and continuous immersion in three feet of water or more
 - » IP68
9. **ProWax miniFIT System**
 - » Protects receiver from moisture and cerumen (miniRITE, miniRITE T, miniRITE T R)
 - » Replaceable by the patient
10. **Telecoil**
 - » Telecoil provides clear telephone reception (miniRITE T, miniRITE T R, BTE 105)
11. **If This Then That (IFTTT)**
 - » Connects Captivate instruments to other internet devices via Sonic Go service
12. **DAI/FM**
 - » Optional adapters for BTE 105 only

* Not all features are available on all models

Model Overview



miniRITE



miniRITE T



miniRITE T R



BTE 105

	miniRITE	miniRITE T	miniRITE T R	BTE 105
Battery Size	312	312	312	13
Power Model	Power Receiver	Power Receiver	Power Receiver	
Directional Microphones	■	■	■	■
Program Button	■	■	■	■
Volume Control	□	□	□	□
Telecoil		■	■	■
Wireless Connectivity	■	■	■	■
Receiver Sizes	Small (60) Medium (85) Power (100) Power (105)	Small (60) Medium (85) Power (100) Power (105)	Small (60) Medium (85) Power (100) Power (105)	
Earhook				□
Thin Tube				■
IP Rating	IP68	IP68	IP68	IP68
Tinnitus SoundSupport	■	■	■	■
IFTTT Internet Connection*	■	■	■	■
DAI/FM				■
Li-ion Rechargeability			■	

■ Standard □ Optional

* Requires SoundLink 2 App.

Feature Overview

captivate¹⁰⁰ captivate⁸⁰ captivate⁶⁰ captivate⁴⁰ captivate²⁰

Sound Quality					
Signal Processing	"Speech Variable Processing"				
SmartCompress	10 Options	6 Options	2 Options		
Frequency Bandwidth	10 kHz	8 kHz	8 kHz	8 kHz	8 kHz
Phoneme Focus	■	■	■	■	■
Envelope Focus	■	■	■	■	■
Extended Dynamic Range	■				
Low Frequency Enhancement	■	■	■	■	■
Frequency Transfer	■	■	■	■	
Tinnitus SoundSupport	■	■	■	■	■
Adaptive Feedback Canceller Pro	■	■	■	■	■
Noise Management					
SPiN Noise Reduction	4 Options	4 Options	3 Options	2 Options	2 Options
SPiN Engage	4 Options	3 Options	2 Options		
Impulse Noise Reduction	4 Options	3 Options	3 Options	2 Options	
Wind Noise Reduction	■	■	■	■	■
Soft Noise Reduction	■	■	■	■	■
Directionality					
SPiN Directionality	High/Med	Med	Med	Low	Low
Omni Directionality	■	■	■	■	■
Fixed Directionality	■	■	■	■	■
True Directionality	■				

Final Comments

Thank you for joining us
today for Sonic's Course:

- Captivate
100|80|60|40|20
Introduction

Any Questions?

- 888.423.7834
- www.sonici.com
- www.mysonici.com
- Email:
support@sonici.com

What Life Sounds Like

Bluetooth is a registered trademark owned by Bluetooth SIG, Inc. USA.

Apple, the Apple logo, iPhone, iPad, iPod touch, and Apple Watch are trademarks of Apple Inc., registered in the U.S. and other countries. App Store is a service mark of Apple Inc. Android, Google Play, and the Google Play logo are trademarks of Google LLC.

© 2020 Sonic Innovations, Inc. All rights reserved.

www.sonici.com