

Discover Next

Move beyond the words

Bill Christman, AuD
Senior Regional Trainer

Marion Dellamonica, AuD, CH-TM
Regional Trainer

unitron Love the experience

A Sonosax brand

© 2019 Unitron. All rights reserved.

Learner outcomes

Upon completion of this course, attendees will be able to:

1. Summarize the benefits of Unitron's Discover Next platform and be able to demonstrate how the advanced performance can provide an easy first-fit.
2. Outline the key updates in TrueFit v4.3.
3. Identify benefits of performance innovations and translate use into successful fittings in-clinic and remotely via asynchronous remote support.
4. Explain the process of conducting asynchronous hearing instrument adjustments for clients.



Enhanced conversations

Easy connections

Li-ion rechargeables

Moxi Move R

Discover Next

More to love:

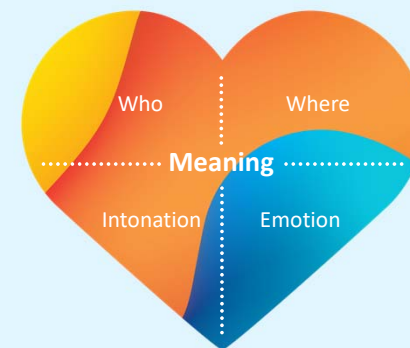


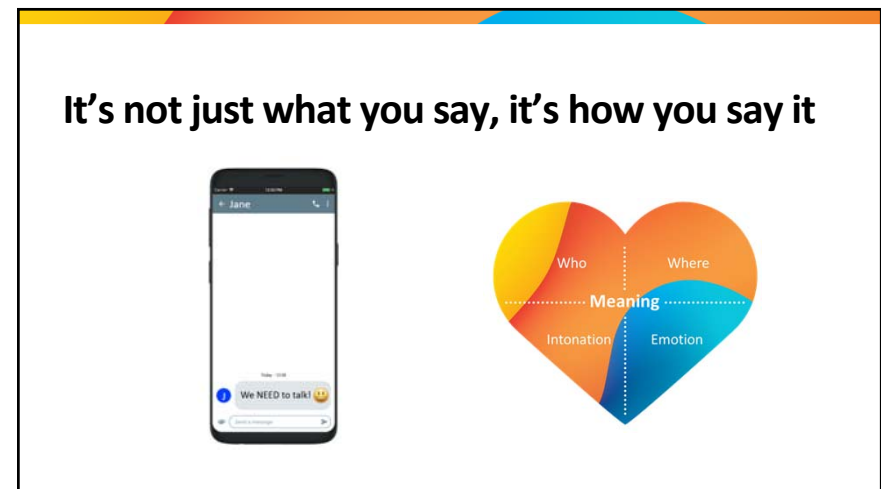
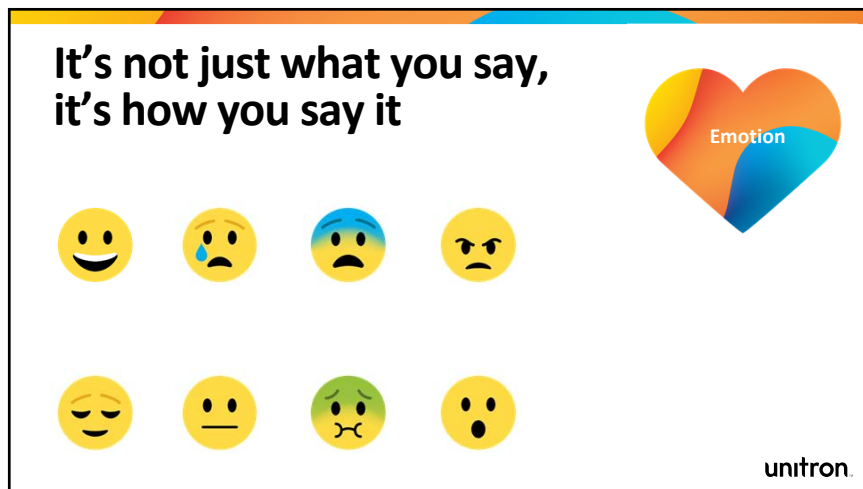
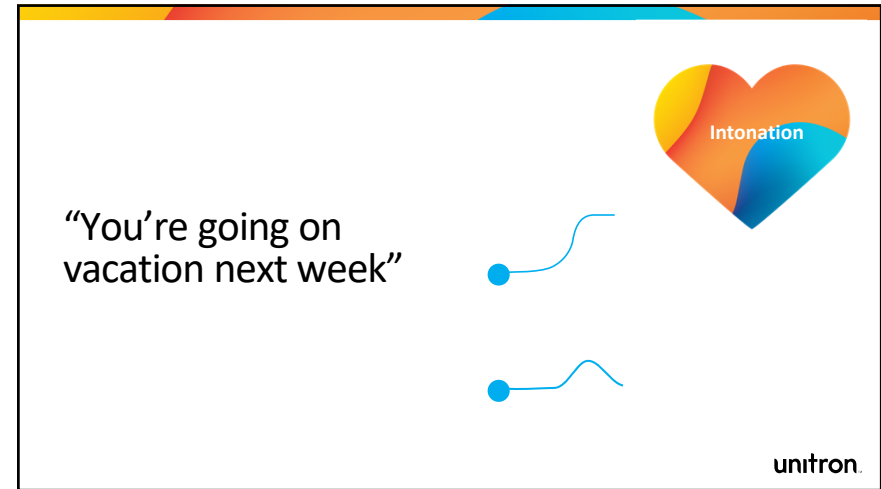
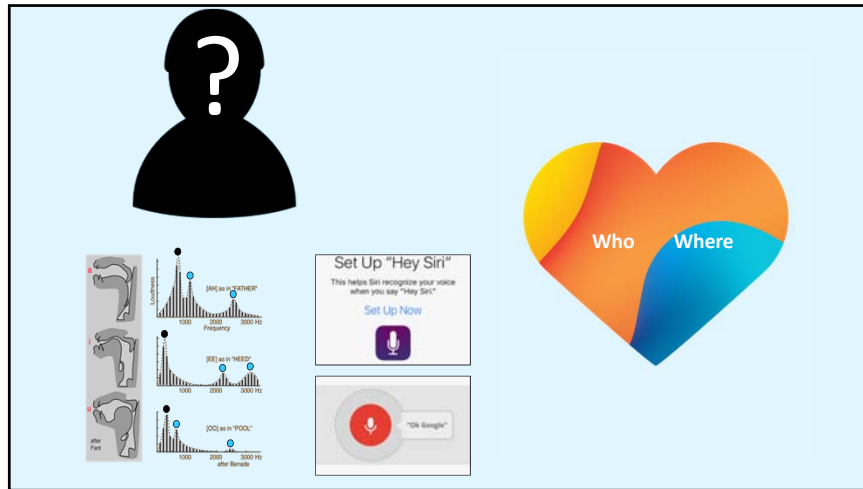
New styles:
3 Inera™ ITEs
Stride™ M BTE



New to client care:
Remote adjust

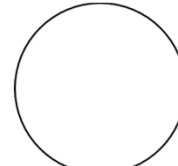
unitron.



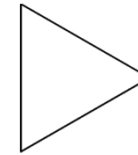




Discover Next: SoundCore



SoundNav 3.0



Sound Conductor

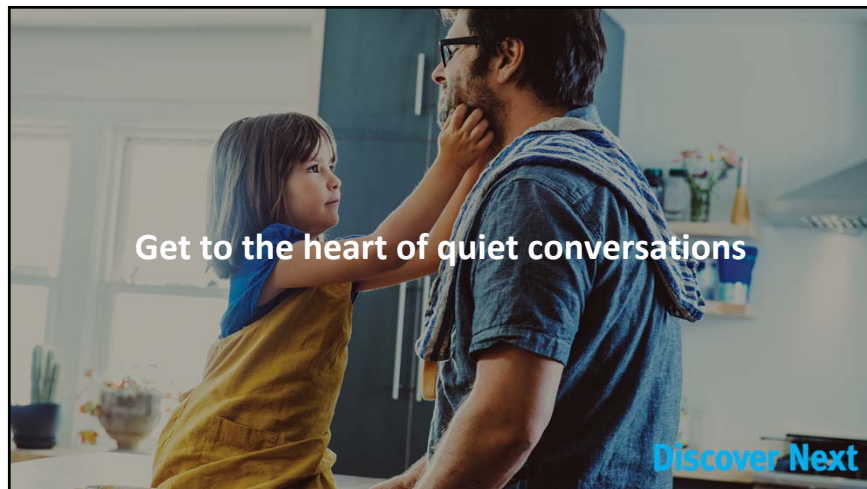


Spatial Awareness

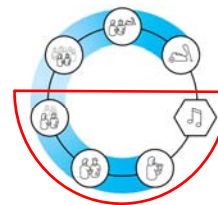


SpeechPro

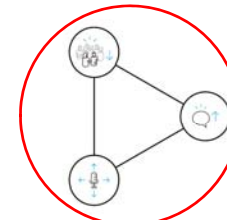
SoundCore



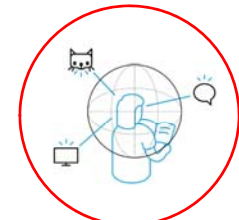
SoundCore in quiet environments



SoundNav 3.0



Sound Conductor



Spatial Awareness

Introducing soft speech lift



Soft speech lift

makes the subtle nuances of speech (soft speech cues) more pronounced, making even soft-spoken people, (like grandchildren) easier to hear.



SoundNav 3.0

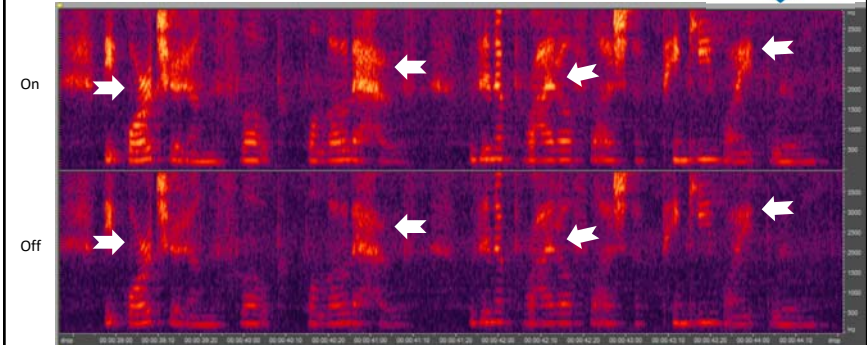
Relevant manual programs
✓ Place of Worship ✓ Acoustic Telephone

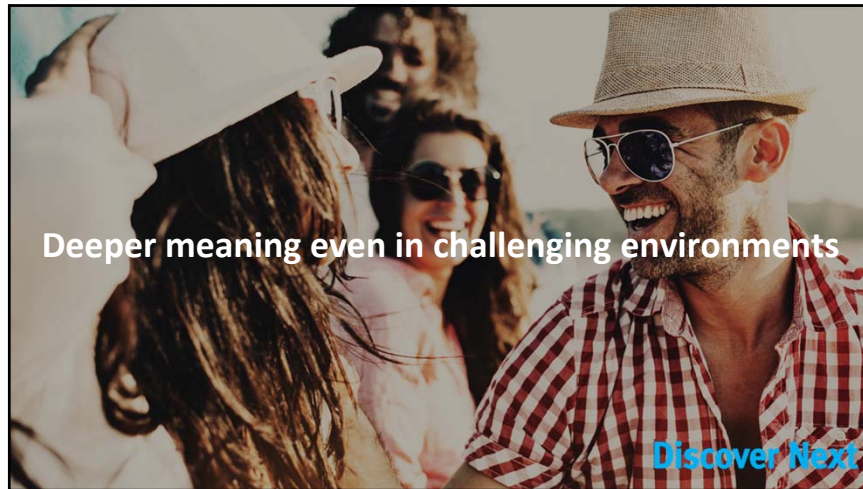


Lifting soft speech



Soft speech lift

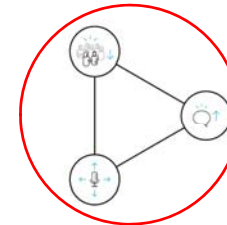




SoundCore in high noise situations



SoundNav 3.0



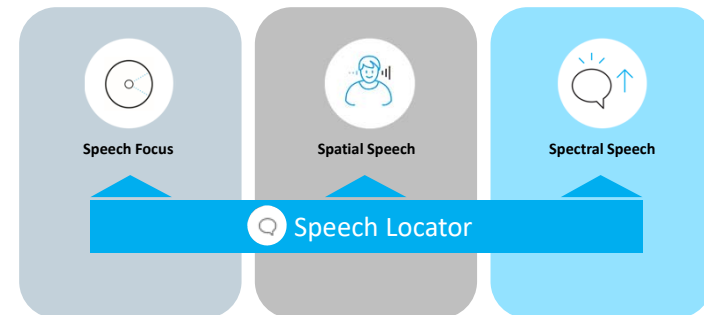
Sound Conductor



SpeechPro



SpeechPro



Speech Locator

Detection of the location of speech



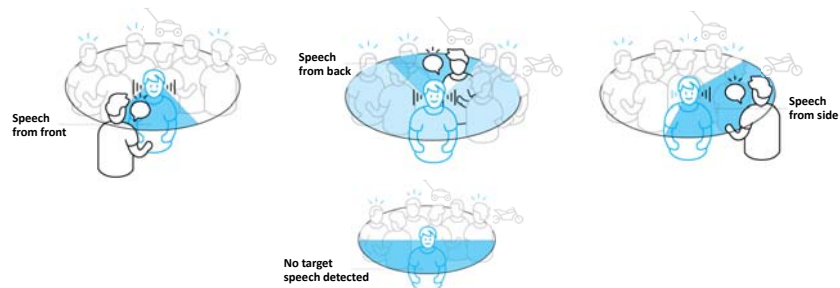
Speech Focus

Directional beamforming towards the speaker



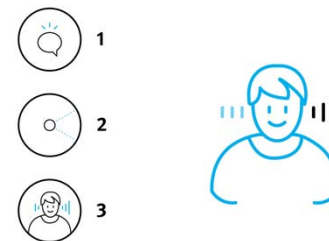
Speech Focus

Directional beamforming towards the speaker



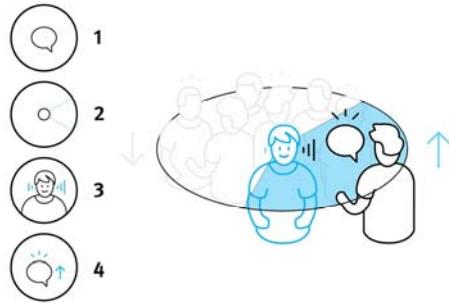
Spatial Speech

Dynamic preservation of localization cues



New with Discover Next: Spectral Speech

Distinction between speech and noise

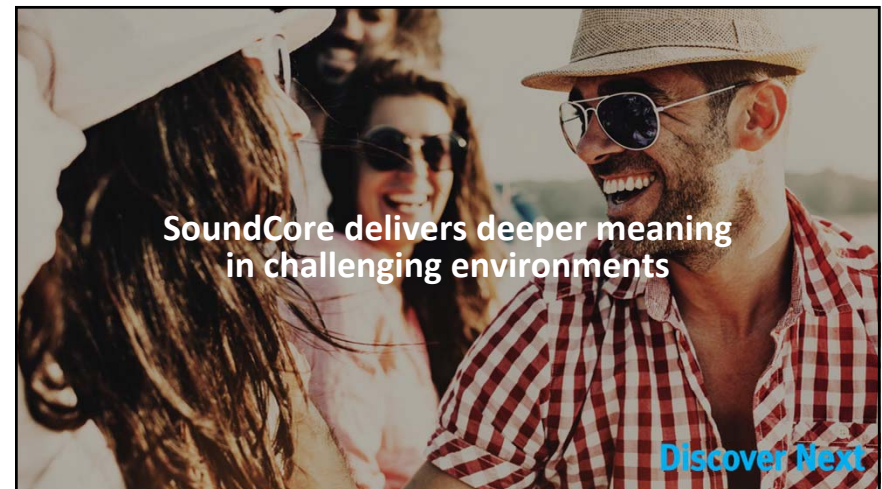
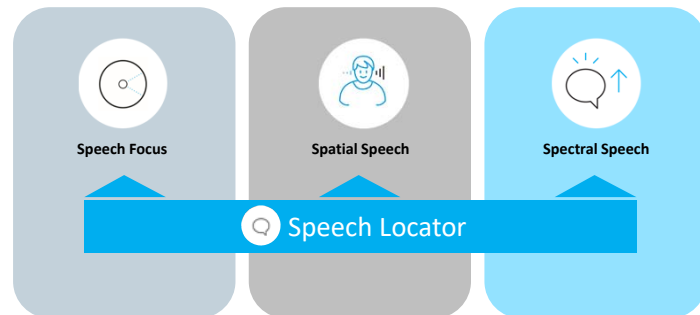


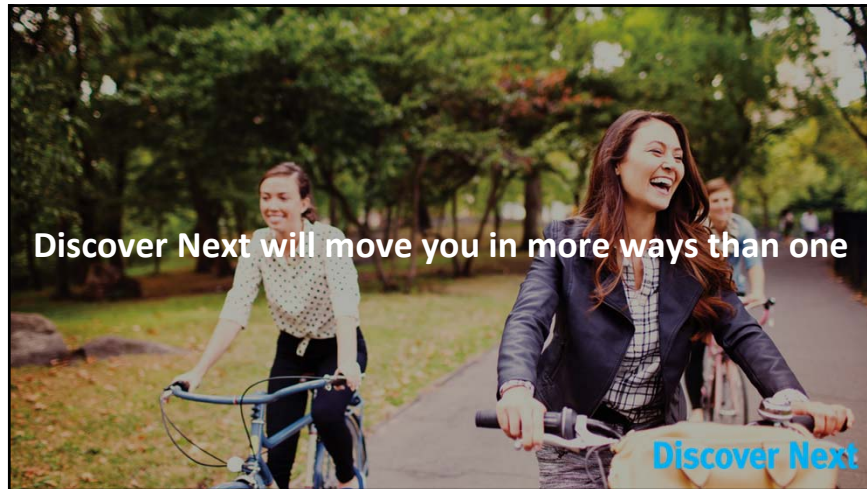
Spectral Speech

Distinction between speech and noise



SpeechPro





Introducing Stride M powered by Discover Next

- Standard 312 battery
- Slimtube or earhook/earmold fitting
- Full SoundCore functionality
- Telecoil
- SWORD 3.0
- All accessories



unitron.

Stride performance profiles



Style

Peak output/gain (2cc) filtered earhook
Peak output/gain (2cc) slim tube

Stride M

128/63
All 122/58

Stride PR

130/66
127/60



----- Slim tube (power down)

unitron.

Introducing Inera powered by Discover Next



unitron.

EarMatch™

1

Characterize

A 3D model of the individual's ear is generated from an impression. Based on this model, EarMatch analyzes a multitude of anatomical parameters.

2

Recognize

Our recognition algorithm identifies ears by analyzing their unique features, then searches our comparative database to select a match.

3

Customize

Our modeling process then customizes the beamformer's calibration to create a directional response optimized for the individual's ear.

Discover Next Inera 312 wireless

Our first custom product with 2.4 GHz wireless functionality!

- Full SoundCore functionality including SpeechPro
- SWORD 3.0
 - MFA connectivity – iOS and Android
 - Hands-free binaural phone calls
 - Stereo quality direct media streaming
 - All accessories



unitron.

DX Inera non-wireless options

When small size is most important

- Non-wireless, omni-directional products have a different feature set
- Benefits:
 - Cosmetic appeal
 - 10A battery CIC, IIC
 - 312 battery ITC
 - Telecoil (option)
 - Push button (option)
 - IIC remote (option)



unitron.

Insera performance profiles

Receiver type	M	P	SP	UP
Peak output/gain (2cc)	109/40	115/50	119/60	127/70
Available in style	All styles	All styles	All styles	312 wireless only

unitron.

Compatibility with wireless solutions

Style	Remote Control	PartnerMic	TV Connector	Roger Direct	IIC remote	Noahlink wireless	Hi-Pro and NoahLINK
DX Moxi RICs	•	•	•	•		•	
DX Stride BTEs	•	•	•	•		•	
312 W Dir	•	•	•	•		•	
312 Omni							•
10A Omni					•		•

*The 312 omni and 10A omni require programming cables

unitron.

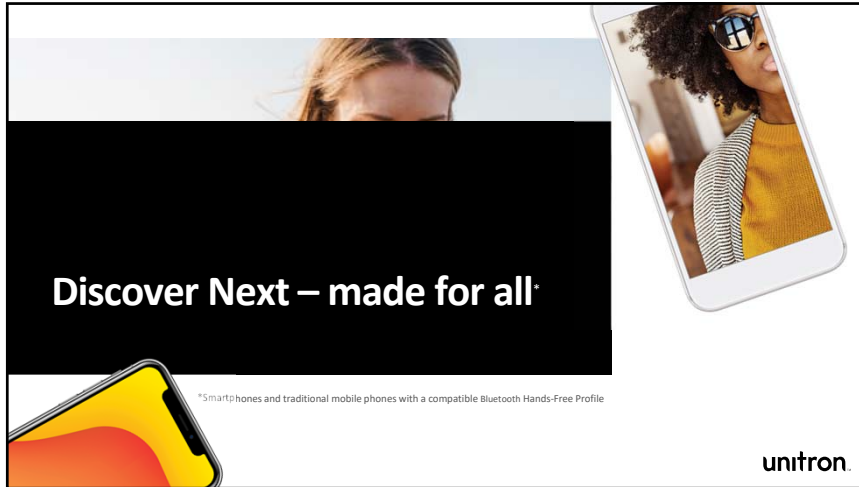
Fantastic runs in the family



unitron.

SoundCore		Discover Next 9	Discover Next 7	Discover Next 5	Discover Next 3
SoundNav	SoundNav 3.0	•	•	•	•
	Total listening environments	7	6	4	2
	Conversation in a crowd	•	•	•	•
	Conversation in a small group	•	•	•	•
	Music	•	•	•	•
	Quiet	•	•	•	•
	Noise	•	•	•	•
	Conversation in quiet	•	•	•	•
	Conversation in noise	•	•	•	•
	Total streaming environments	2	2	2	2
	MediaNav speech	•	•	•	•
	MediaNav music	•	•	•	•
Sound optimization	Sound Conductor	•	•	•	•
	Speech enhancement	•	•	•	•
	Soft speech lift	•	•	•	•
	Noise reduction	•	•	•	•
	Microphone features	•	•	•	•
Localization	Spatial Awareness	•	•	•	•
	Personalized	•	•	•	•
	Pinna Effect	•	•	•	•
Performance in challenging environments	SpeechPro	•	•	•	•
	Speech Locator	•	•	•	•
	Speech Focus	•	•	•	•
	Spatial Speech	•	•	•	•
	Spectral Speech	•	•	•	•
	SpeechZone 2	•	•	•	•
Fine-tuning channels		20	16	14	12

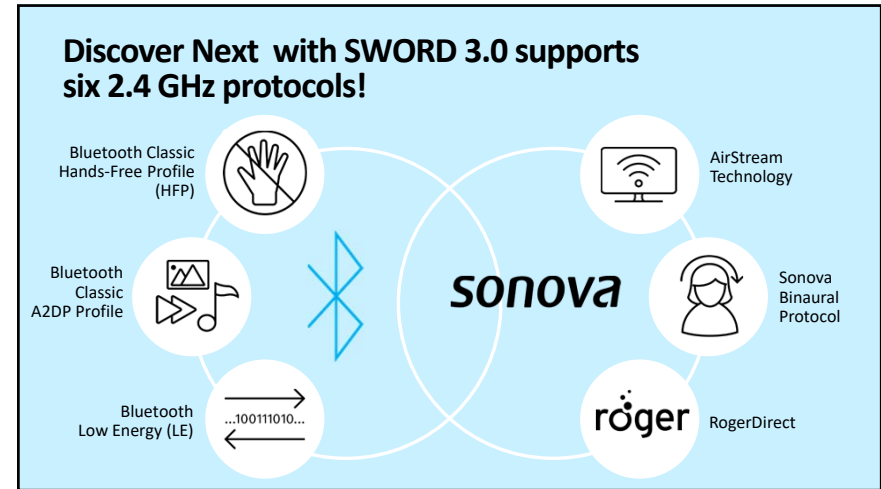
Compatibility limited for some product styles



Discover Next – made for all

*Smartphones and traditional mobile phones with a compatible Bluetooth Hands-Free Profile

unitron.



Convenient solutions



TV Connector


PartnerMic

Remote Control

Roger

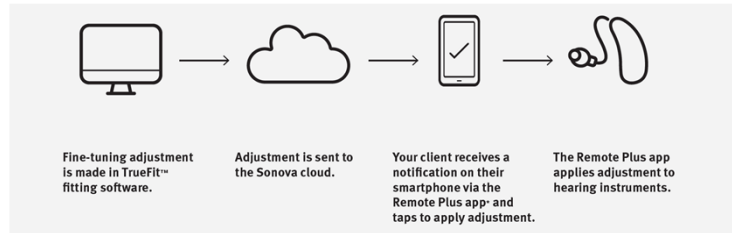
Remote Plus app – functionality

- Change programs
- Control volume
- Watch how-to videos
- Adjust the balance between the media audio and the environment
- Adjust tinnitus masker
- Submit ratings on their hearing experience
- Coach
- Equalizer (*NEW with Discover Next – June 2020*)
- **NEW* remote adjust



What's new in Unitron TrueFit v4.3

1. Support for Discover Next Stride M BTE and custom devices
2. Remote adjust



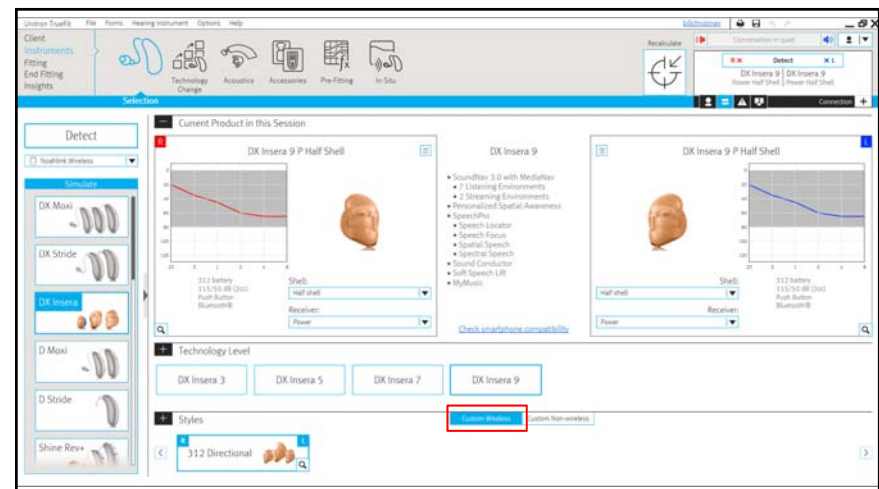
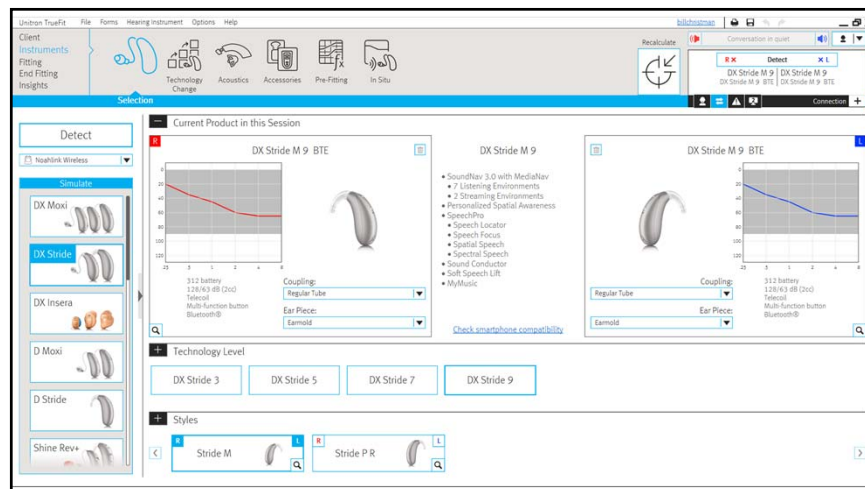
unitron.

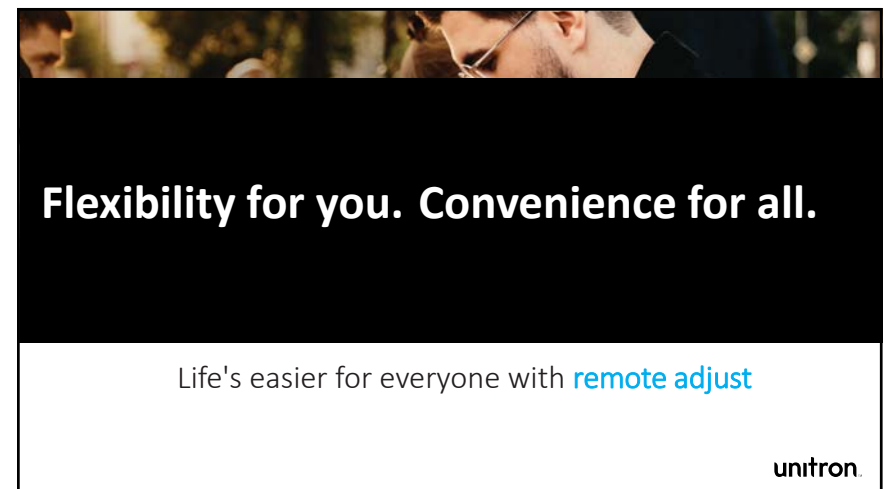
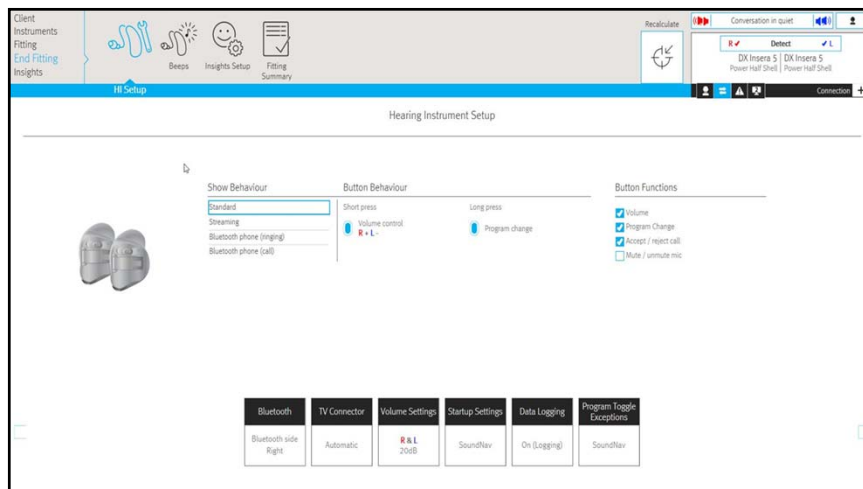
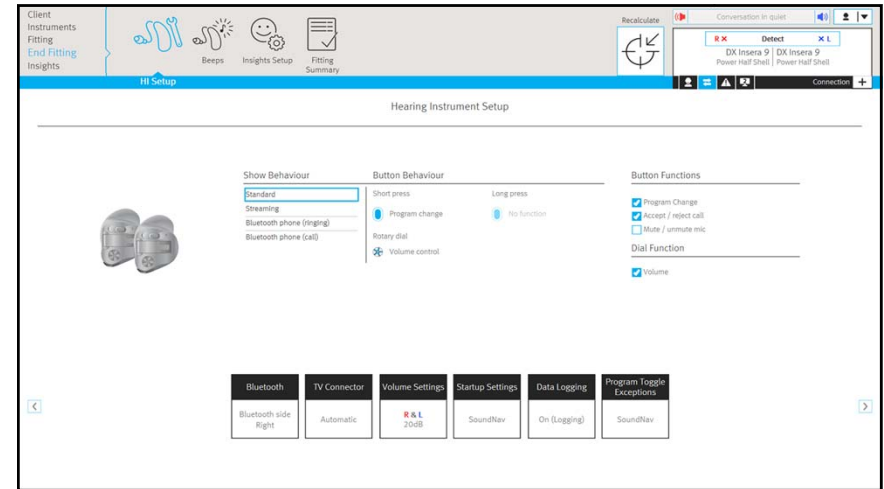
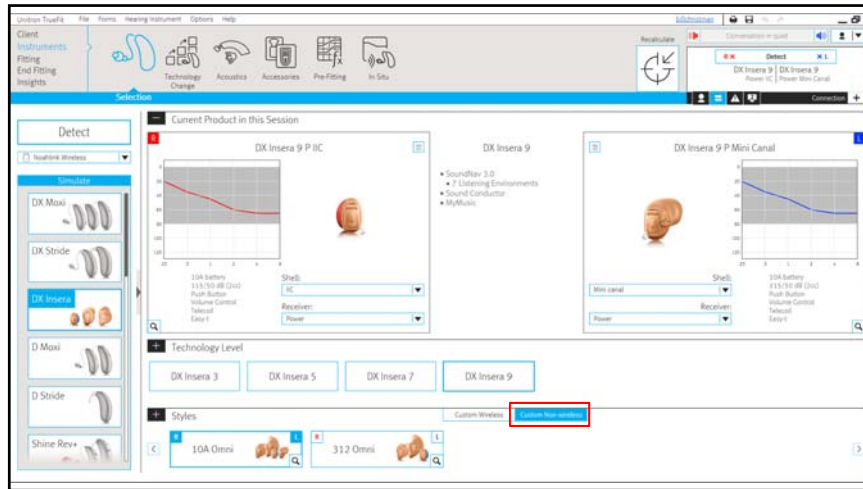
Programming devices

- **Noahlink Wireless** – use with Discover Next wireless products
 - Plug and Play
 - Pairing mode – Lithium-ion vs disposable batteries
- **Noahlink/HiPro** – use with Discover Next non-wireless products
 - Use cables
 - Battery pills for customs

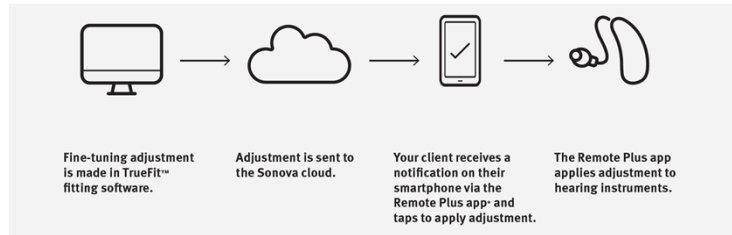


unitron.





Remote adjust is a simple, and straight forward work flow.



unitron.

Insights

Insights is a combination of tools that address the emotional side of the client's journey, engaging them in the process the whole way through, and giving you deep insights into your clients' needs and preferences so you can give them a truly personalized fit and experience.



Usage



Log It All



Ratings



Coach



Remote adjust

*NEW



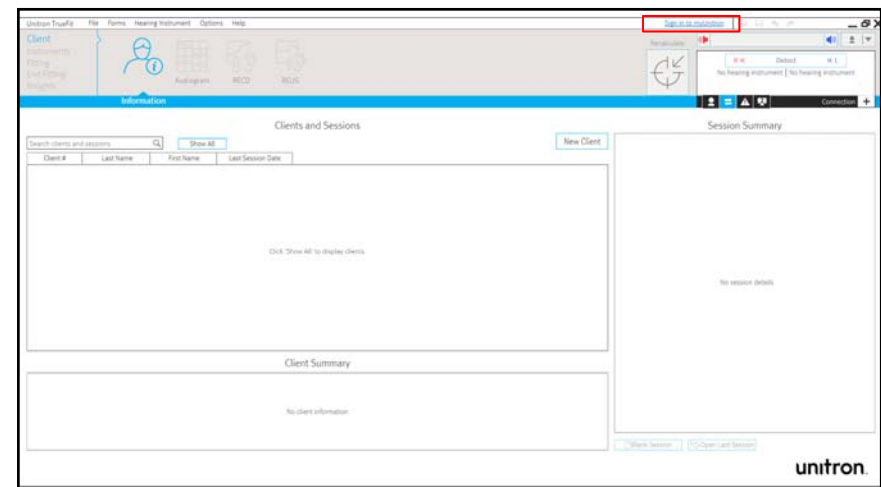
Overall satisfaction

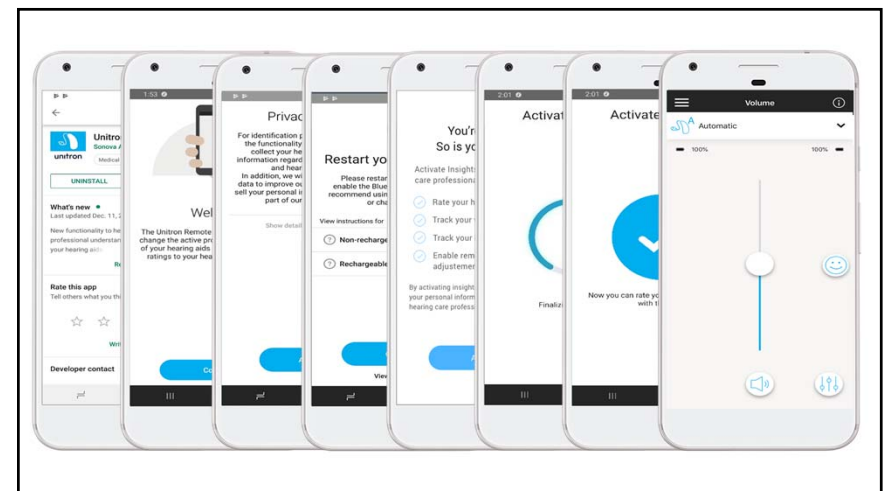
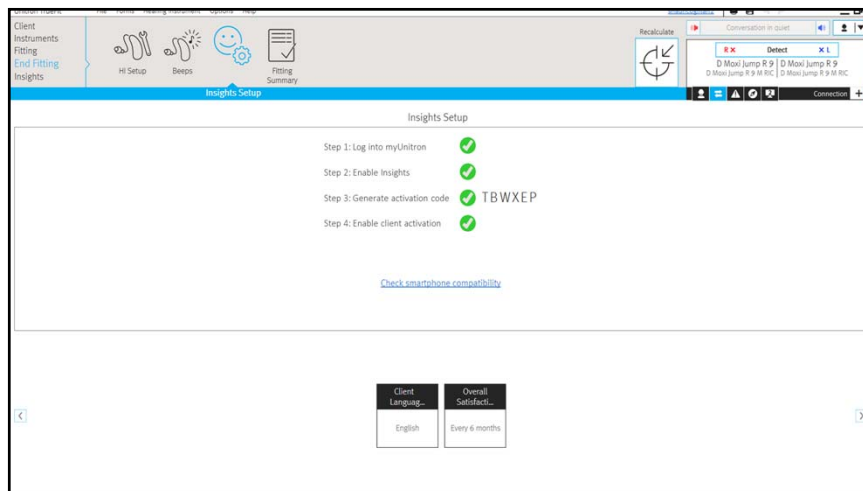
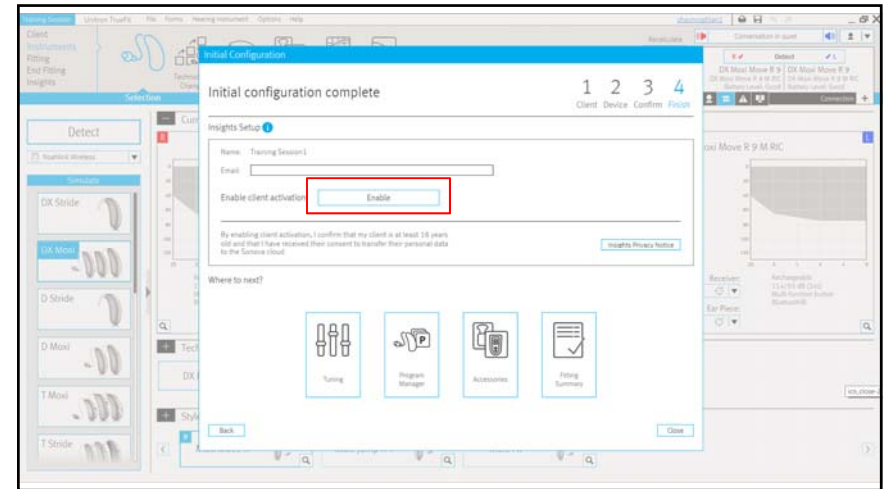
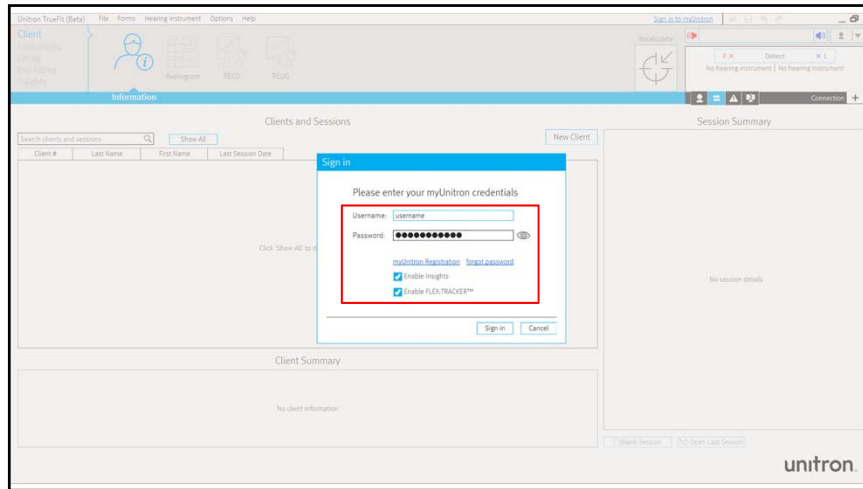


Notifications

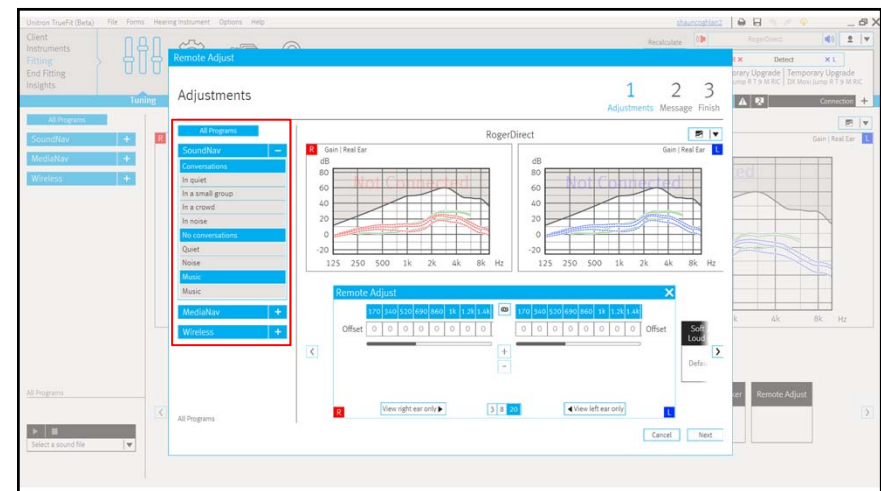
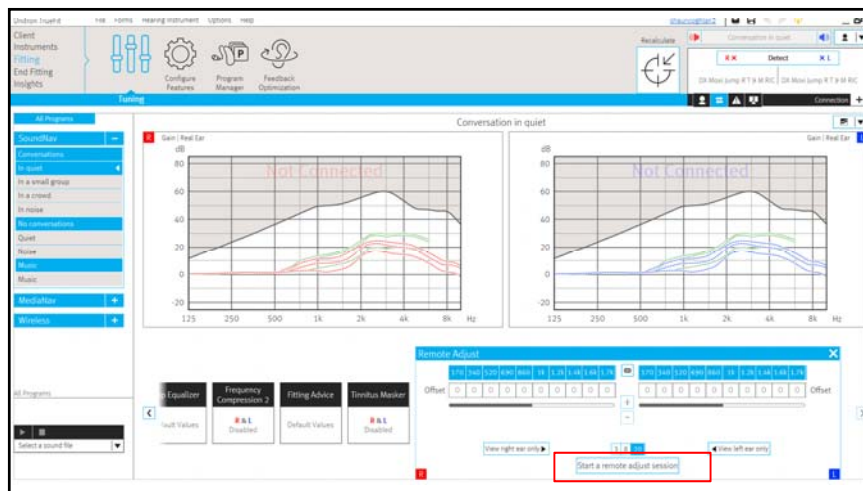
unitron.

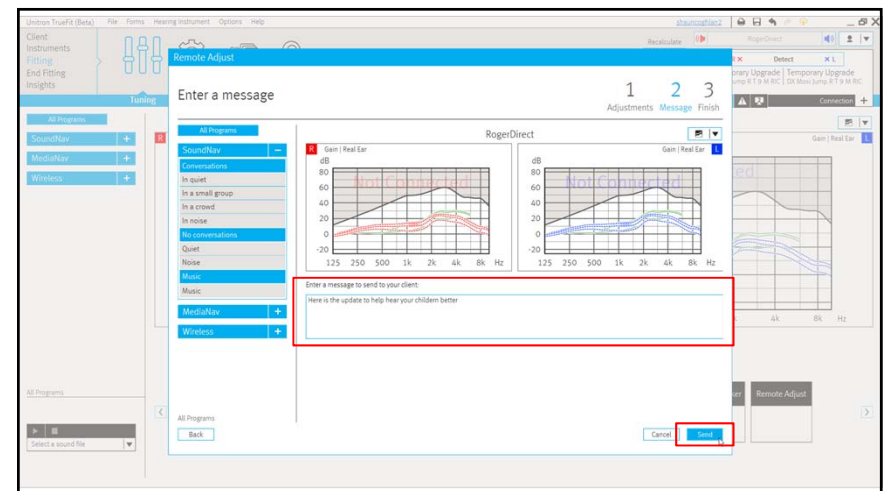
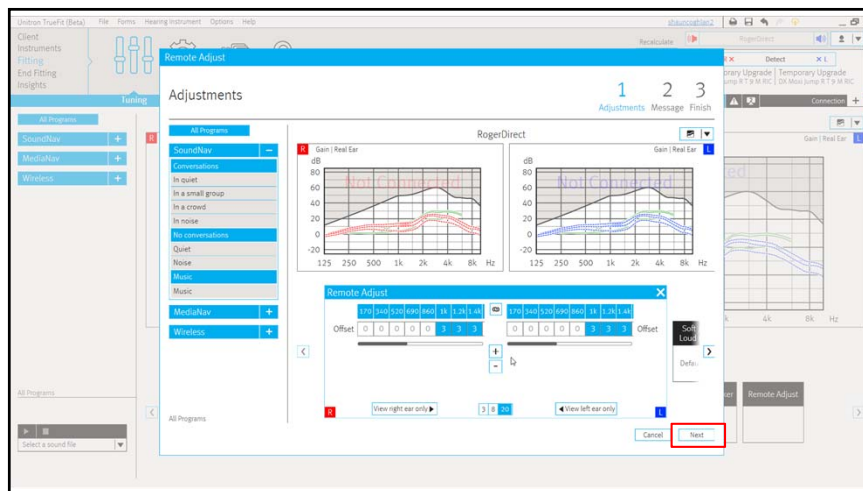
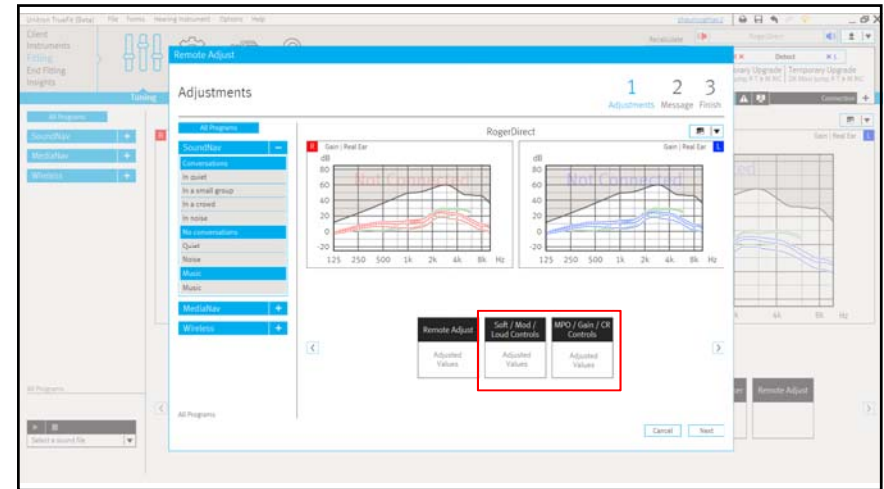
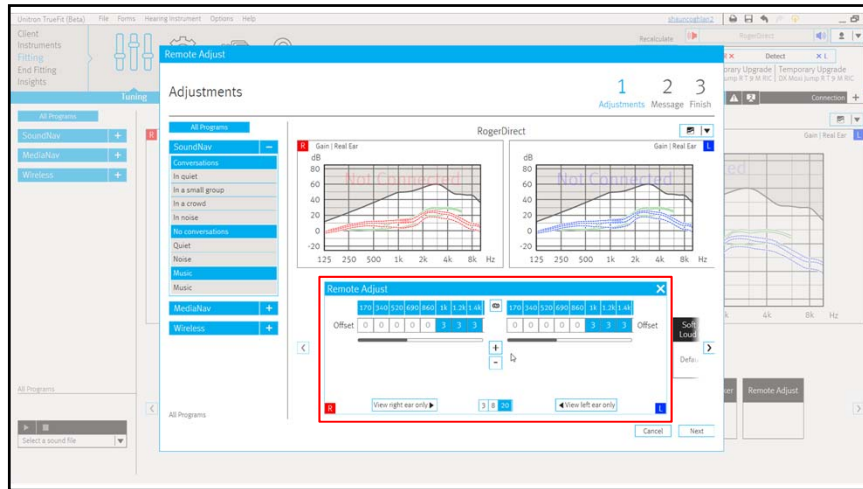
How to enable remote adjust

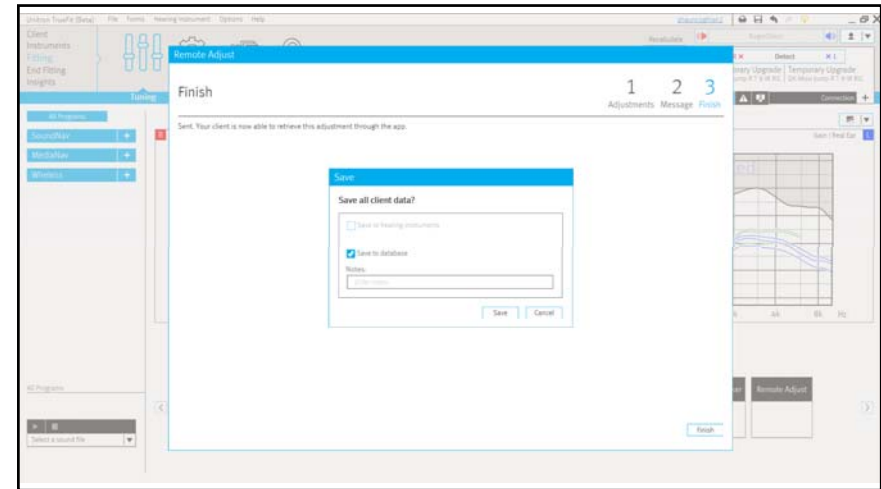
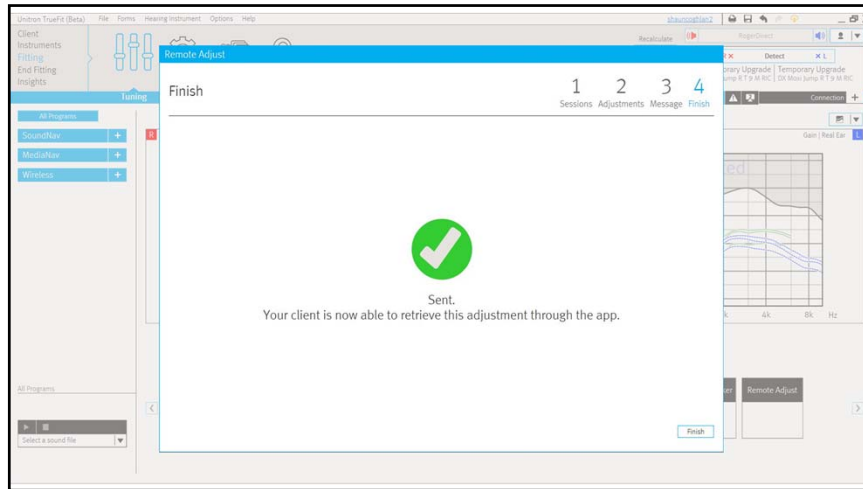




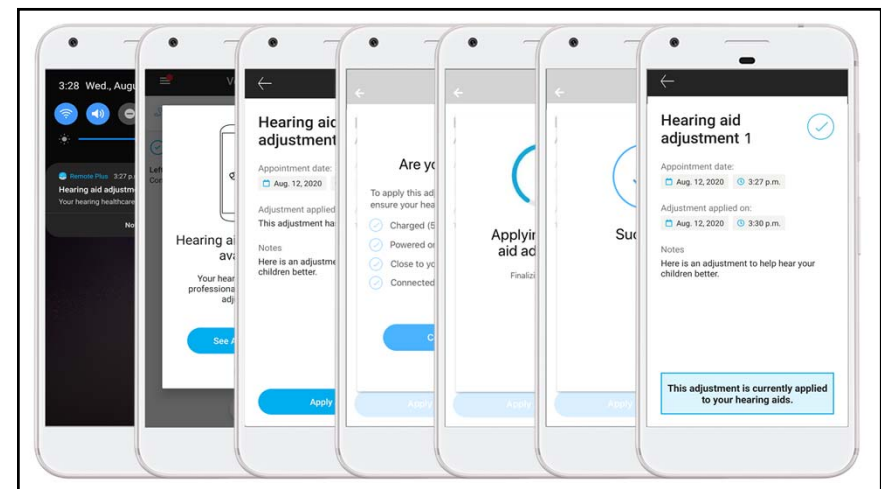
How to perform a remote adjust session







How your client applies
an adjustment



Additional information

Question:
What do I need to do for clients who were fit with Discover Next hearing instruments before remote adjust was launched?

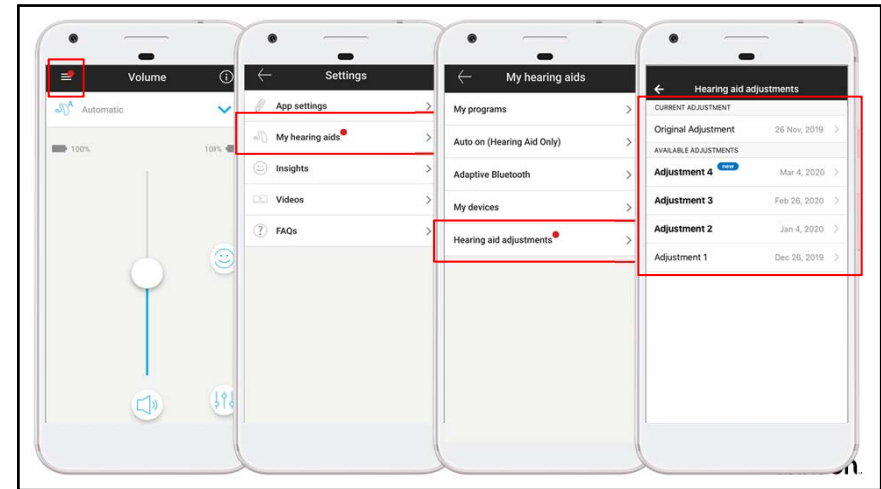
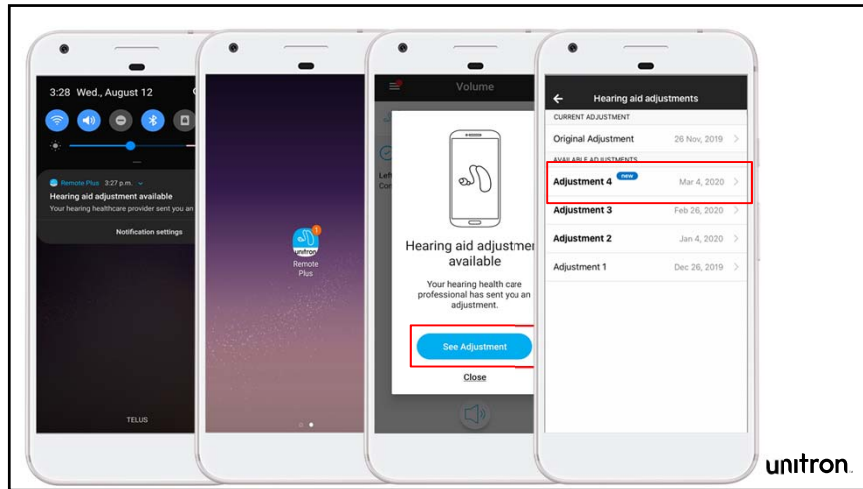
Question: What do I need to do for clients who were fit with Discover Next hearing instruments before remote adjust was launched?

Answer:

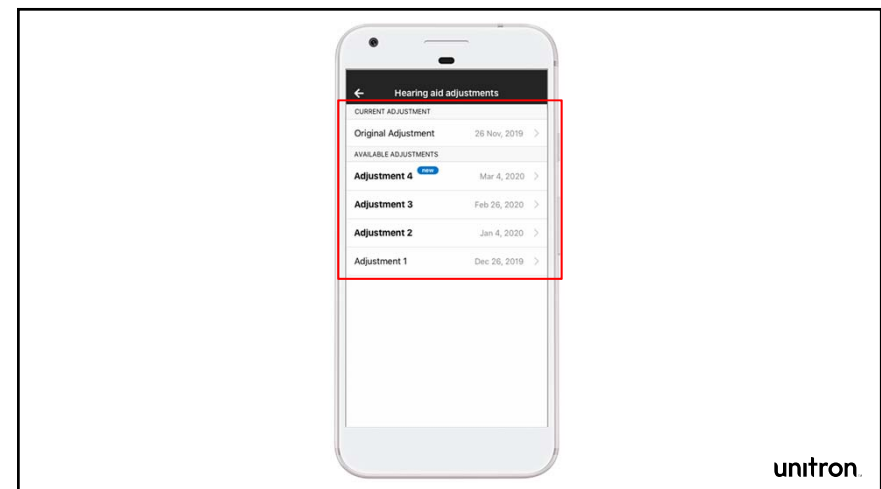
1. Update your fitting software to TrueFit v4.3
2. Bring patients fit with Discover Next products using TrueFit v4.2 back into the clinic
3. Detect your clients devices and ensure that Insights is enabled
4. Save the session to the HIs and database
5. Ask your client to open up the Remote Plus app and connect their hearing instruments
 1. If they haven't activated Insights previously, they will need to activate by going to Settings->Insights->Ratings and follow the steps in the app

unitron.

Question:
If my clients clear their smartphone notifications, will they still know if there is a new remote adjust message?

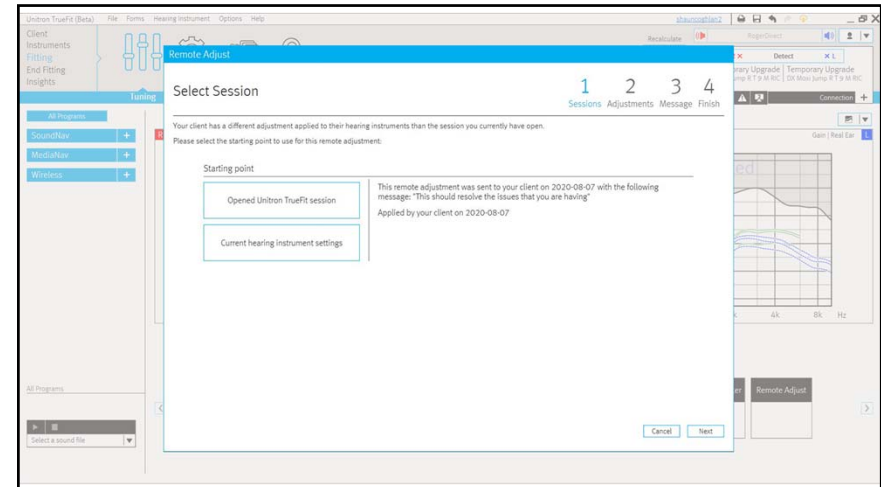


Question:
Can my client revert back to a previous adjustment?



Question:

Is it possible for my client to have a different adjustment on their hearing instruments than what is reflected in TrueFit when I perform a remote adjust session?



Question:

What does a follow up fitting in the clinic look like after a remote adjust session?



