

Unitron TrueFit v4.3 Fall 2020

Bill Christman, AuD
Senior Regional Trainer

Marion Dellamonica, AuD, CH-TM
Regional Trainer

unitron Love the experience

A Sonova brand

© 2019 Unitron. All rights reserved.

Learner outcomes

Learner Outcomes:

Upon completion of this course, attendees will be able to:

1. Outline key updates in Unitron TrueFit v4.3
2. Identify benefits of performance innovations and translate use into successful fitting
3. Explain the process of performing asynchronous hearing instrument adjustments
4. Demonstrate the process of conducting a fitting of Unitron products with Unitron TrueFit v4.3 fitting software



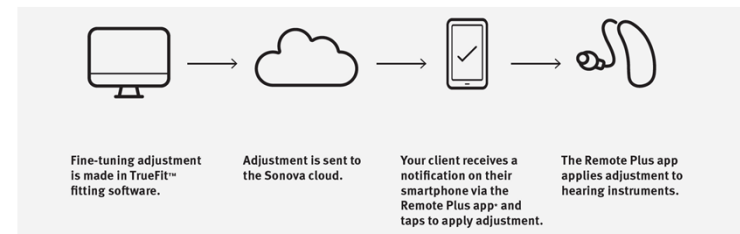
Agenda

- What's new with TrueFit v4.3
- Discover Next products
- Solutions
- Compatibility
- Remote adjust
- TrueFit demonstration



What's new in Unitron TrueFit v4.3

1. Support for Discover Next Stride BTE and custom devices
2. Remote adjust



unitron

Support for Discover Next Stride M and Inera custom products

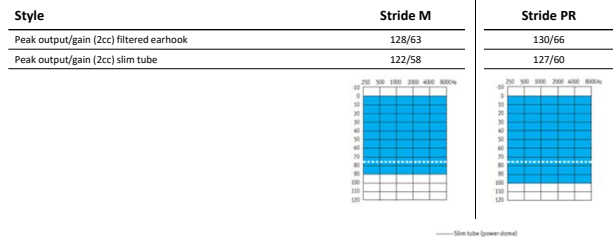
Stride M powered by Discover Next

- Standard 312 battery
- Slimtube or earhook/earmold fitting
- Full SoundCore functionality
- Telecoil
- SWORD 3.0
- All accessories



unitron.

Stride performance profiles



unitron.

Discover Next Inera 312 wireless

Our first custom product with 2.4 GHz wireless functionality!

- Full SoundCore functionality including SpeechPro
- SWORD 3.0
 - MFA connectivity – iOS and Android
 - Hands-free binaural phone calls
 - Stereo quality direct media streaming
- All accessories



unitron.

DX Inera non-wireless options

When small size is most important

- Non-wireless, omni-directional products have a different feature set

- Benefits:
 - Cosmetic appeal
 - 10A battery CIC, IIC
 - 312 battery ITC
 - Telecoil (option)
 - Push button (option)
 - IIC remote (option)



unitron.

Inera performance profiles



| Receiver type | M | P | SP | UP |
|------------------------|------------|------------|------------|-------------------|
| Peak output/gain (2cc) | 109/40 | 115/50 | 119/60 | 127/70 |
| Available in style | All styles | All styles | All styles | 312 wireless only |
| | | | | |

unitron.

Convenient solutions



TV Connector



PartnerMic



Remote Control



Roger

Compatibility with wireless solutions

| Style | Remote Control | PartnerMic | TV Connector | RogerDirect™ | IIC remote | Noahlink wireless | Hi-Pro and NoahLINK |
|----------------|----------------|------------|--------------|--------------|------------|-------------------|---------------------|
| DX Moxi RICs | • | • | • | • | | • | |
| DX Stride BTEs | • | • | • | • | | • | |
| 312 W Dir | • | • | • | • | | • | |
| 312 Omni | | | | | | | • |
| 10A Omni | | | | | • | | • |

*The 312 omni and 10A omni require programming cables

unitron.

Programming devices

- **Noahlink Wireless** – use with Discover Next wireless products
 - Plug and Play
 - Pairing mode – Lithium-ion vs disposable batteries
- **Noahlink/HiPro** – use with Discover Next non-wireless products
 - Use cables
 - Battery pills for customs



unitron.

Flexibility for you. Convenience for all.

Life's easier for everyone with [remote adjust](#)

unitron.

Remote adjust is a simple, and straight forward work flow.



Fine-tuning adjustment is made in TrueFit™ fitting software.



Adjustment is sent to the Sonova cloud.



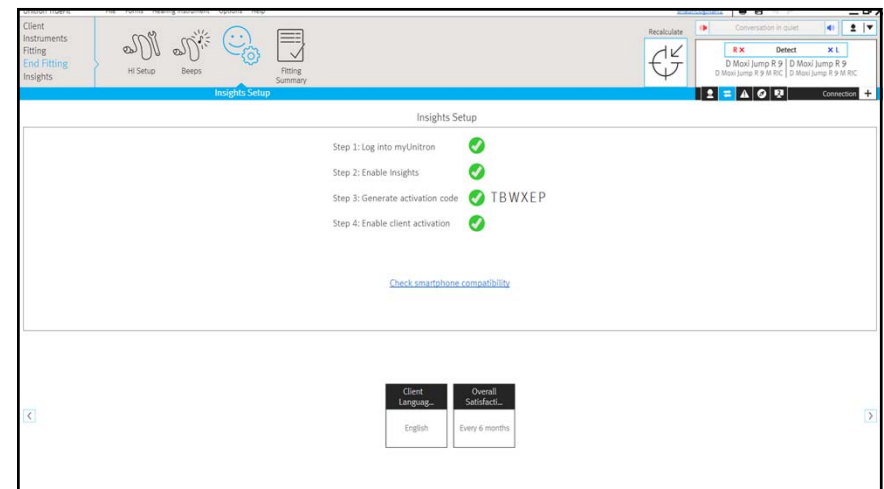
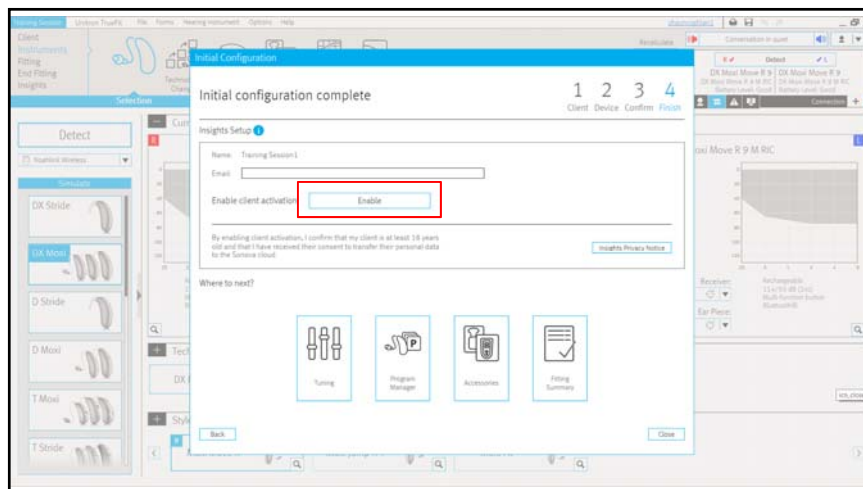
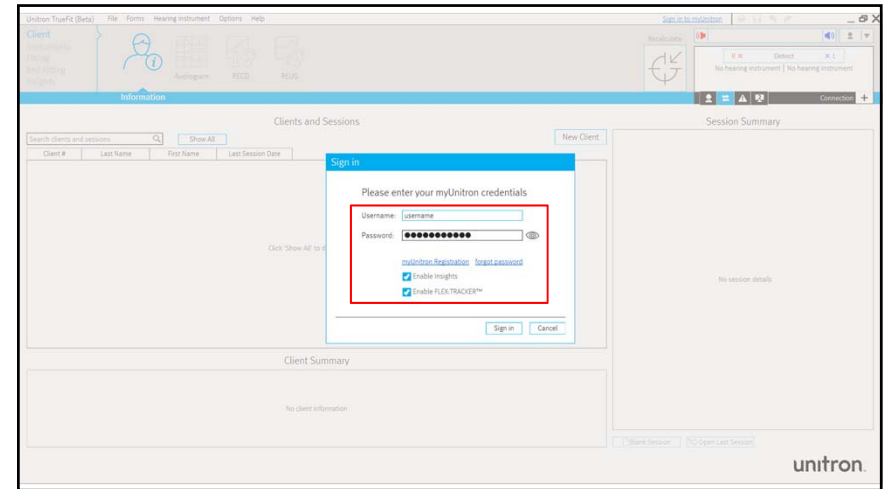
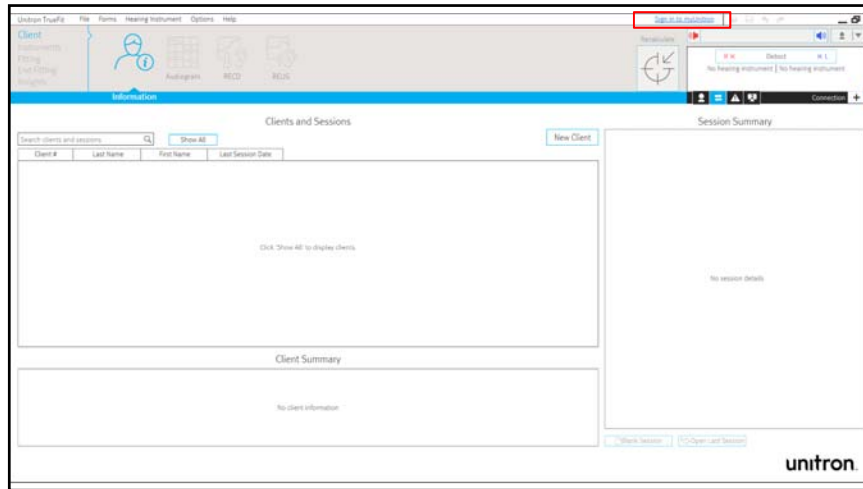
Your client receives a notification on their smartphone via the Remote Plus app and taps to apply adjustment.

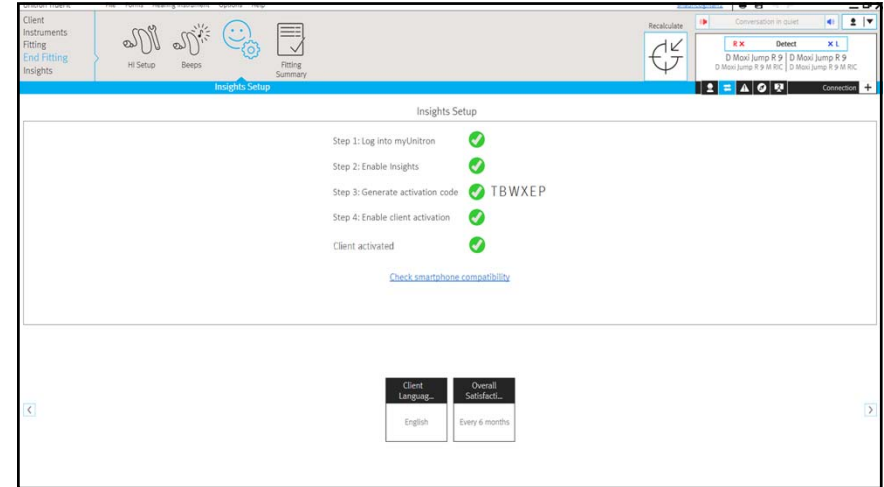
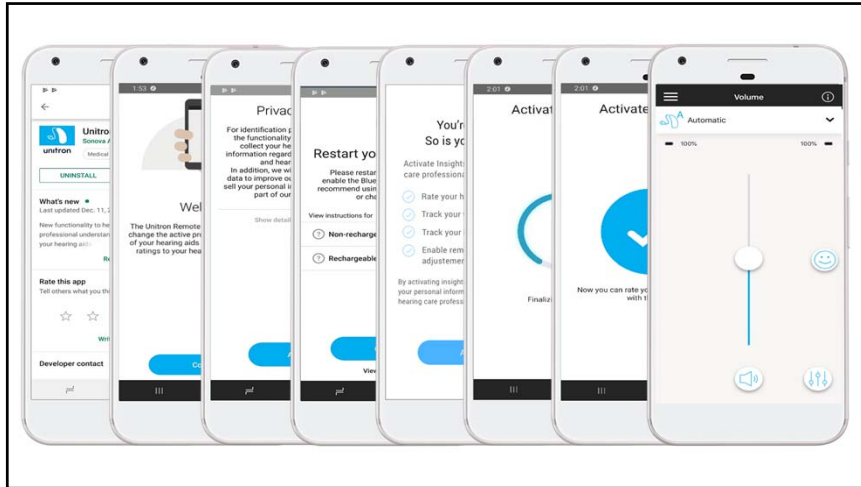


The Remote Plus app applies adjustment to hearing instruments.

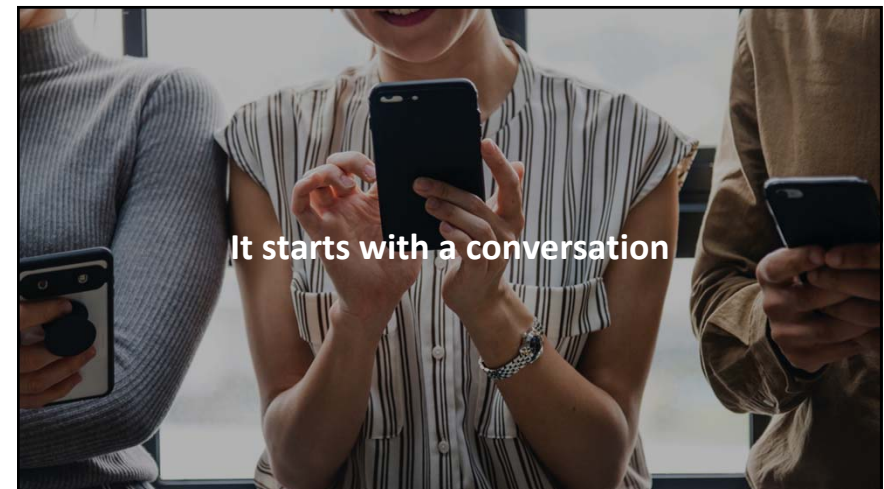
unitron.

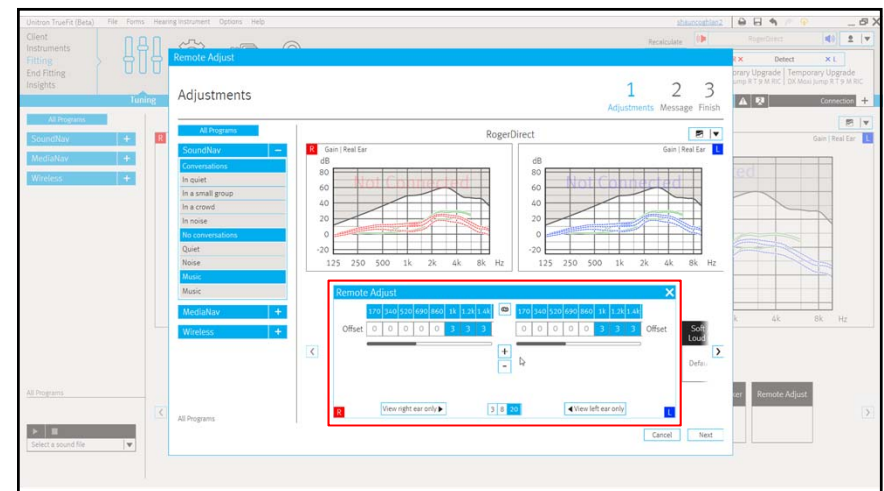
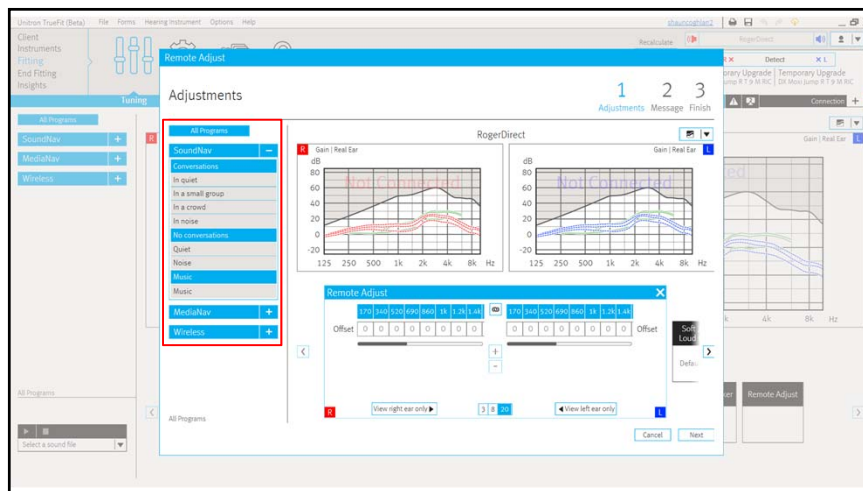
How to enable remote adjust

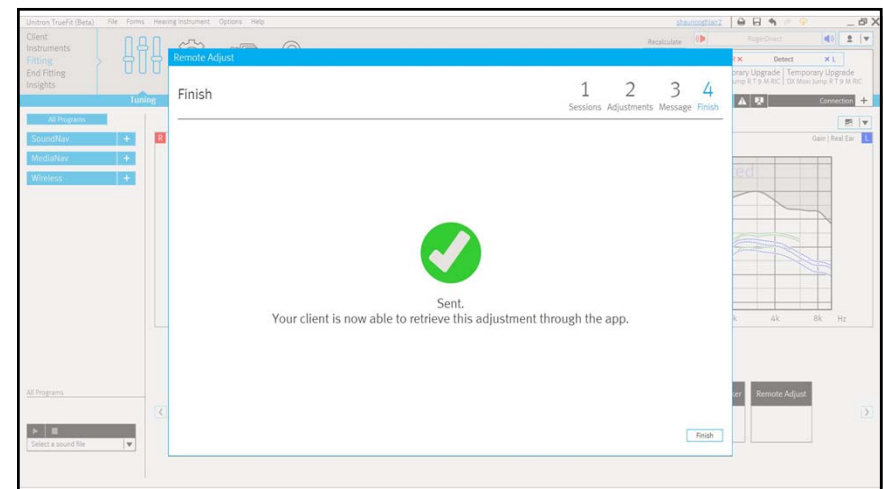
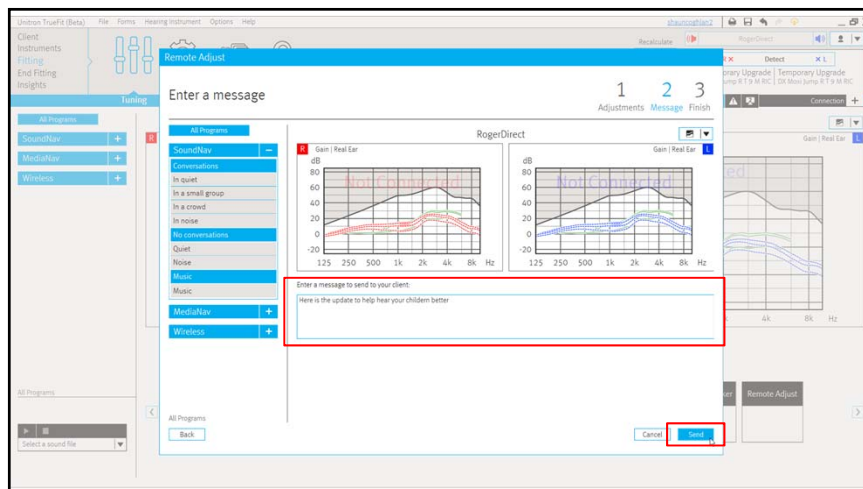
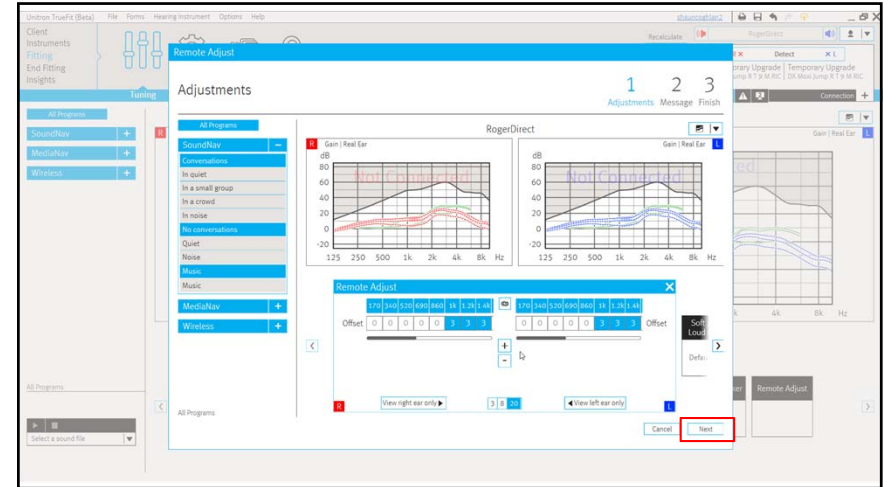
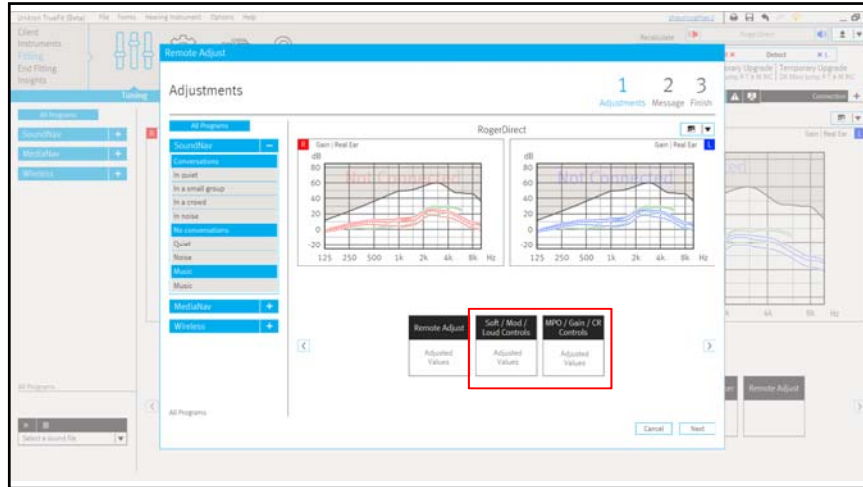


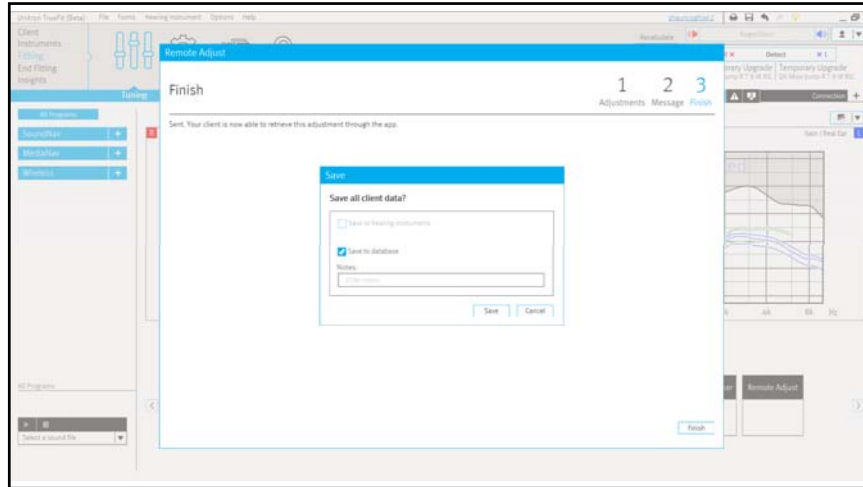


How to perform a remote adjust session

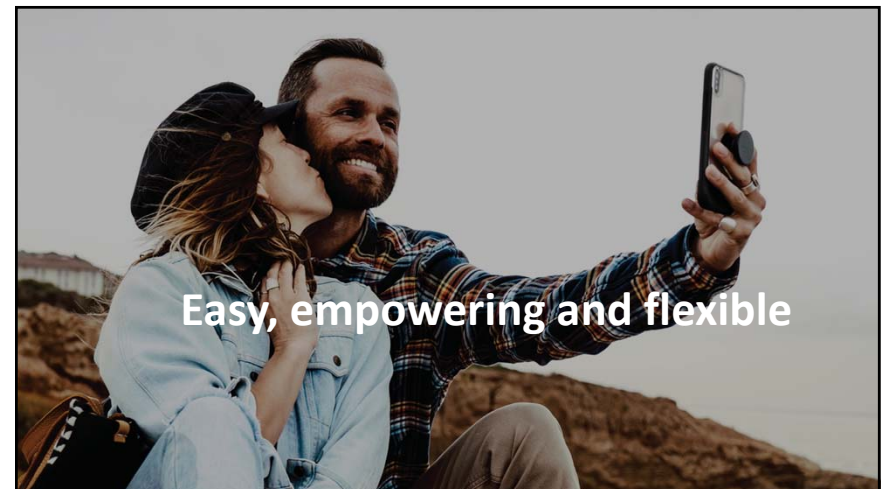
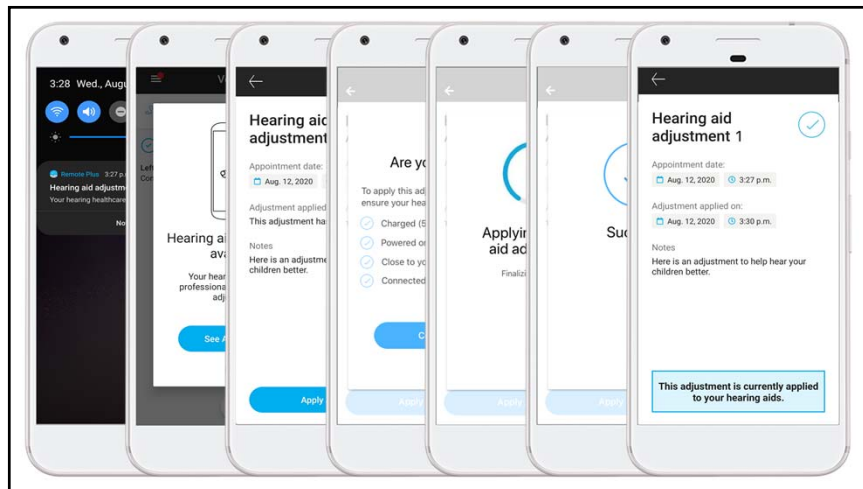








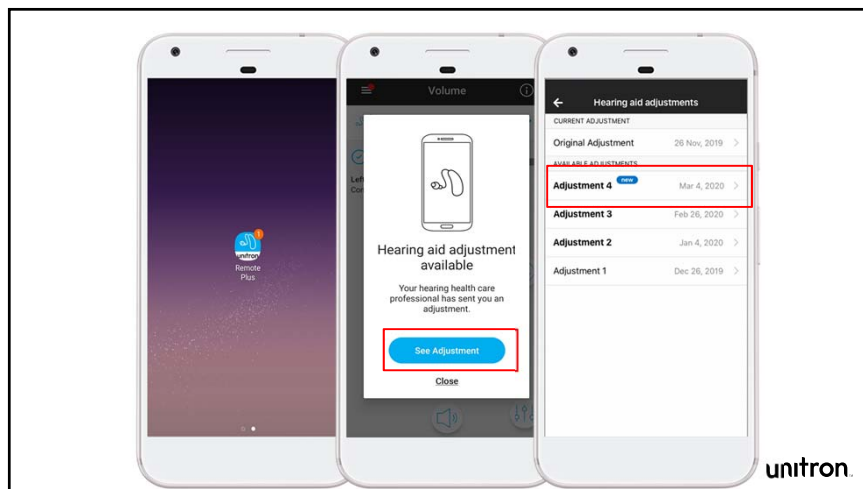
How your client applies an adjustment



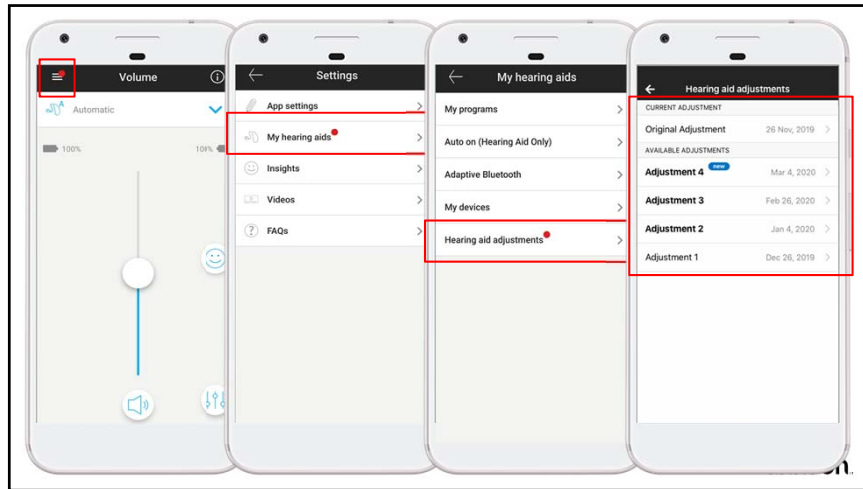
Easy, empowering and flexible

Additional information

Question:
If my clients clear their smartphone notifications, will they still know if there is a new remote adjust message?



Question:
Can my client revert back to a previous adjustment?



Question:
What does a follow up fitting in the clinic look like after a remote adjust session?



Insights within the
Remote Plus app

Insights

Insights is a combination of tools that address the emotional side of the client's journey, engaging them in the process the whole way through, and giving you deep insights into your clients' needs and preferences so you can give them a truly personalized fit and experience.



Usage



Log It All



Ratings



Coach



Remote adjust



Overall satisfaction



Notifications

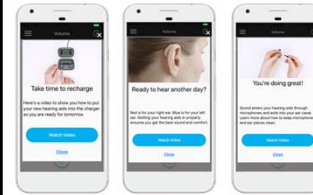
*NEW

unitron.

Coach

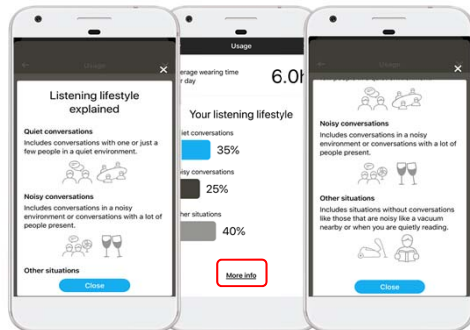
Our **coach** feature is designed to assist you in helping your clients reach their full potential with their new hearing aids

- Analyze performance
 - Usage, ratings, overall satisfaction
- Instruct in relevant skills
 - Insertion/removal, charging/batteries, care & maintenance
- Provide encouragement
 - Consistent usage, tips for hearing in noise



unitron.

Remote Plus app – client view of usage



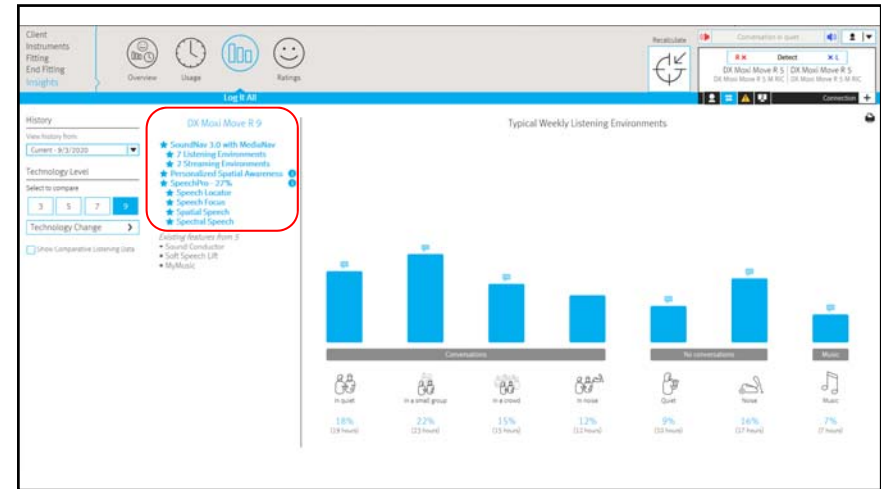
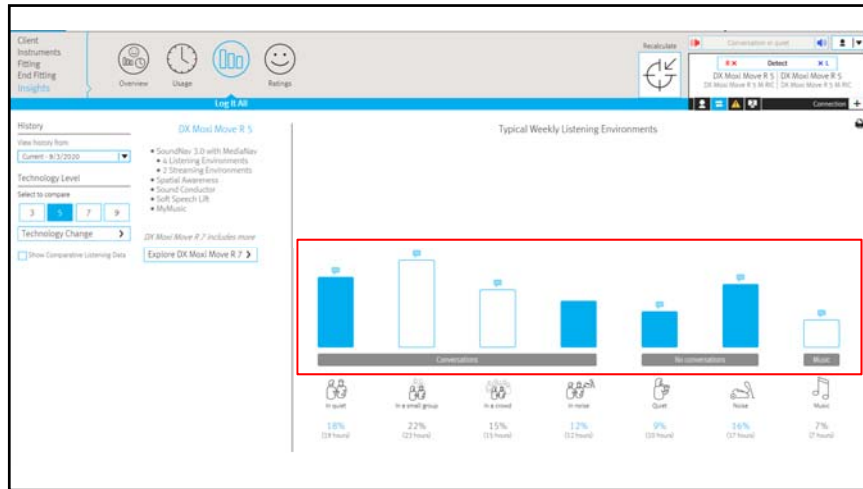
unitron.

Log It All

Objectively tracks the amount of time a patient spends in each of the 7 different listening environments

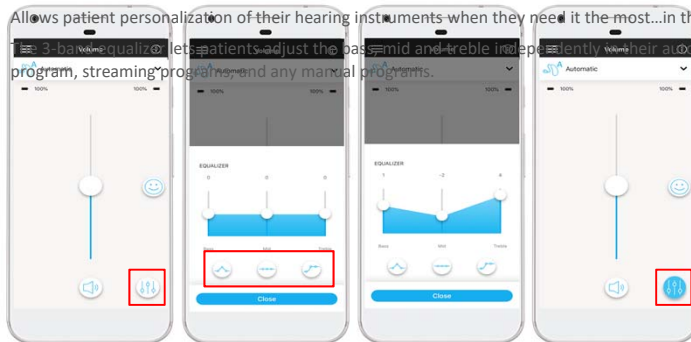
Regardless of the hearing instrument's technology level, Log It All tracks all listening environments (even if that environment isn't optimized at the instrument's technology level)

unitron.

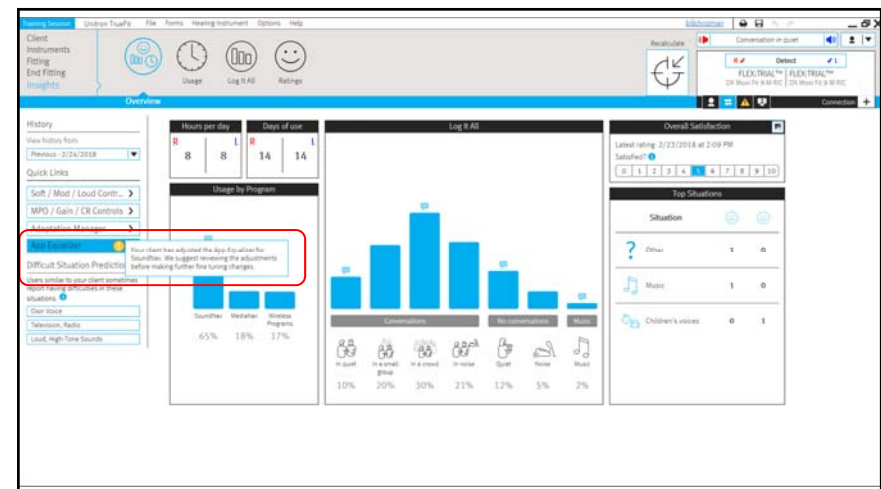


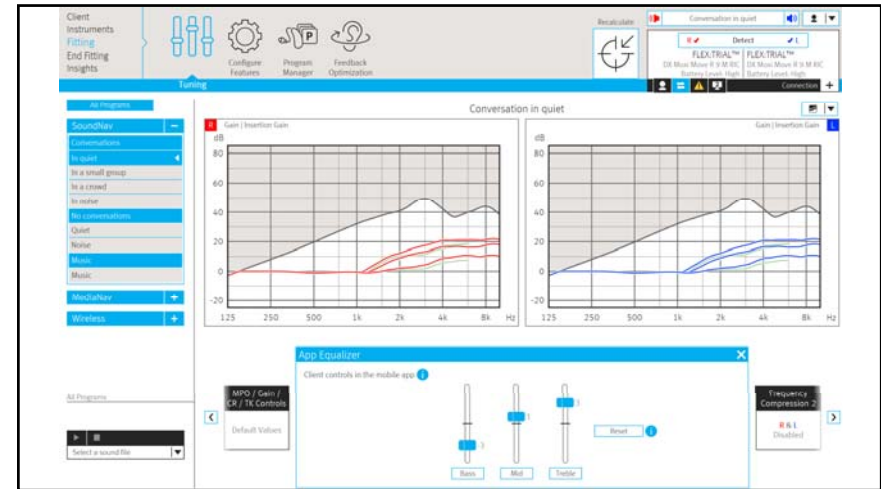
Equalizer

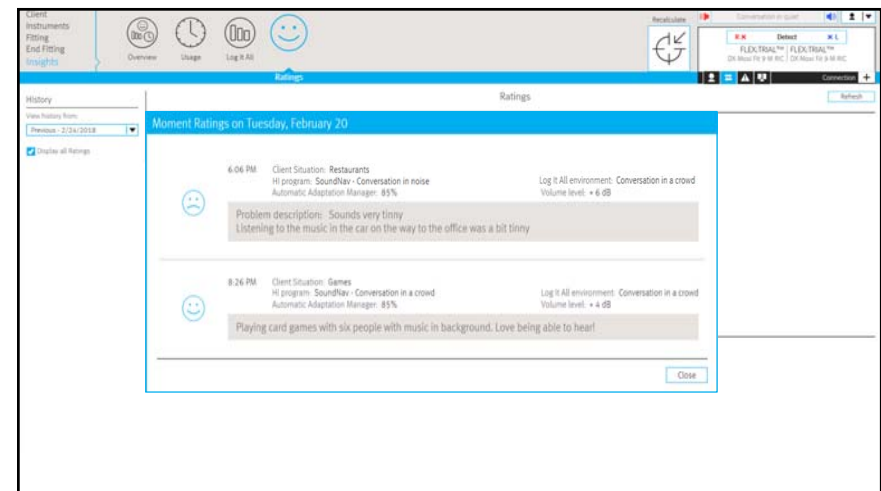
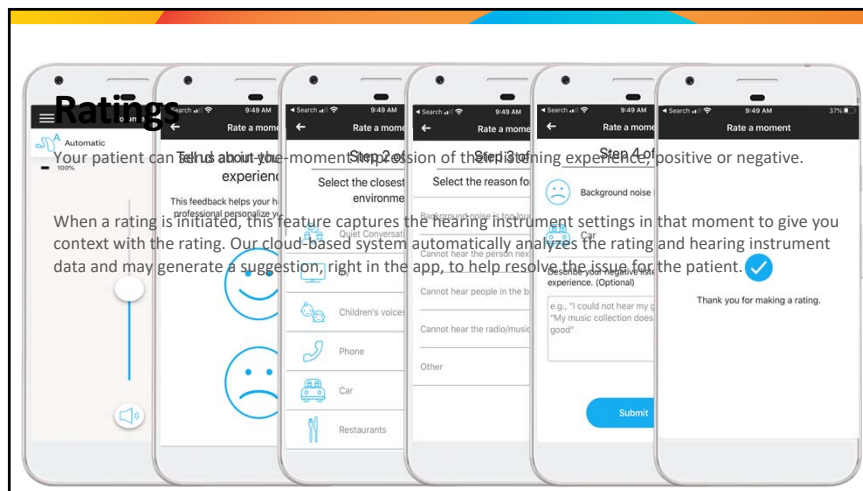
Allows patient personalization of their hearing instruments when they need it the most...in the moment. Lets patients adjust the bass, mid and treble independently with their automatic program, streaming programs, and any manual programs.

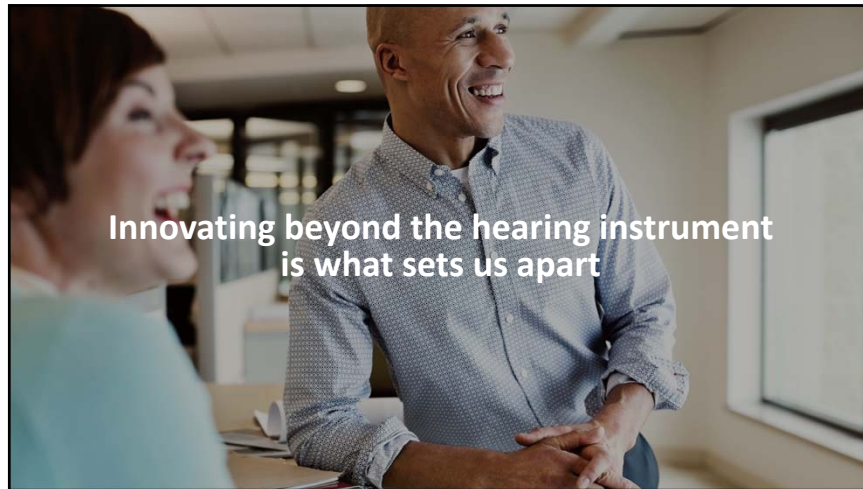


unitron.



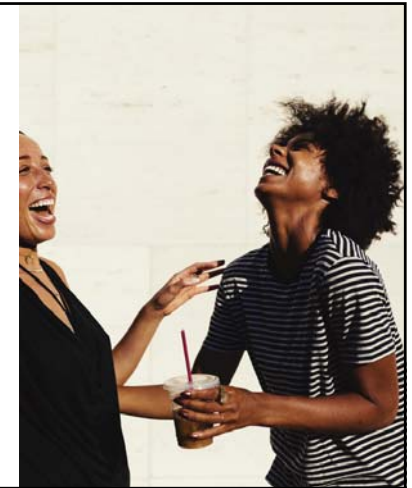






In summary

- Today's training session reviewed what's new with TrueFit v4.3
 - Discover Next products
 - Solutions
 - Compatibility
- In addition, we highlighted the new features in the Remote Plus app
 - Unitron's new **remote adjust** distance support solution
 - Insights



For additional training

Audiology Online

- Move Beyond the Words – Fall 2020
(Friday 9/25)

Live 1-on-1 training with a Unitron Regional Trainer

- calendly.com/unitron-training-team

myUnitron.com > myLearning

Guides

- Discover Next programming and pairing guide
- Get to know remote adjust: a how-to guide
- Insights overview

